

WIRESX

A SMART BRAIN NEEDS A SMART MANAGEMENT

The cleverest cable management system



EDITORIAL

XAVIER ISART

Technical Director



“Wirex meets all the essential requirements for a good cable manager”.

MARKET NEED

It is no news that a good cable manager is needed to handle today's growing demand for structured and optic fiber cabling in a datacenter. But one thing that needs to be considered is that it is not enough just to organize the cables. Their management should also be efficient, convenient and safe. We must ensure a minimum of errors and incidents due to improper cable handling.

It is important and necessary to minimize the room footprint of the space required by the switching and patching equipment, as well as their interconnectivity, in order to reduce the operating cost of a datacenter. The correct and safe installation of the equipment must also be ensured, together with adequate ventilation, of great importance in order to enhance cooling efficiency.

Wirex meets all of these essential requirements for a good cabling manager.

DIFFERENTIATION / VALUE ADDED

When we decided to design the Wirex product range, we felt we should offer the industry something different, evolve the solutions currently available on the market and provide added value.

In addition to the traditional structured cabling and optic fiber management solutions, Wirex offers high density patching solutions thanks to its side patching system, which allows for increased switching density in a single cabinet and a drastic reduction in cable lengths.

When developing Wirex we focused on providing the above solutions in different versions and configurations. These solutions are available in open frame (2 post and 4 post), and rack version.

When developing the rack version, the main design criterion followed was to ensure total integration and compatibility with Saifor's CUBO system (aisle air contention system), providing full aesthetic consistency with the visual appearance of the ARCTIC rack range.

CONTENTS

+ Why Wirex?	p. 06
+ Benefits	p. 08
+ Versions and dimensions	p. 16
2 post	p. 20
4 post	p. 22
Rack	p. 24
+ Accessories	p. 26
2 post	p. 26
4 post	p. 28
Rack	p. 30
+ Panels and doors	p. 32
+ Common accessories	p. 36
+ Technical Data	p. 38
+ Saifor: A rising player	p. 60



WRX

Certifications, directives and quality assurance.

All the products featured in this brochure have been designed and manufactured in conformity with the following certifications and directives:

- UNE EN ISO 9001:2008
- UNE EN ISO 14001:2004
- EC 60297
- EIA/ECA-310-E
- EMAS Regulation (EC) no 1221/2009.
- Machine Directive 2006/42/EC.
- Low Voltage Directive 2006/95/EC.
- Electromagnetic Compatibility Directive 2004/108/EC.



SAIFOR is a leader in the design, manufacturing and integration of high performance solutions for Data Processing Centers and Control Rooms.

The SAIFOR group designs and produces all of its products in-house in Barcelona (Spain). The production plant is equipped with state-of-the-art machinery which gives us the fullest flexibility to cater to our clients' specific requirements, while strictly adhering to our commitments and our Environmental Responsibility policy.

SAIFOR has positioned itself as a leading technology player, with highly reliable and enduring products, fully compliant with the most exacting European quality standards.

WHY WIREX?

NEEDS

The increasingly widespread and established use of high density network servers and equipment, coupled with the current trend among companies toward consolidation, virtualization and automation, is driving the need for maximizing efficiency in the use of space to cut down capital expenditure and operating costs without sacrificing network reliability and availability.

TRENDS

Growing demand for data center services leads to ever greater physical infrastructure requirements, coupled with the need to handle of increasingly higher cable densities and larger-sized network equipment. But at the same time the cost associated with such infrastructures is seen as an increasingly important consideration, and hence energy efficiency has become a key factor.

GAIN SPACE AND SECURITY

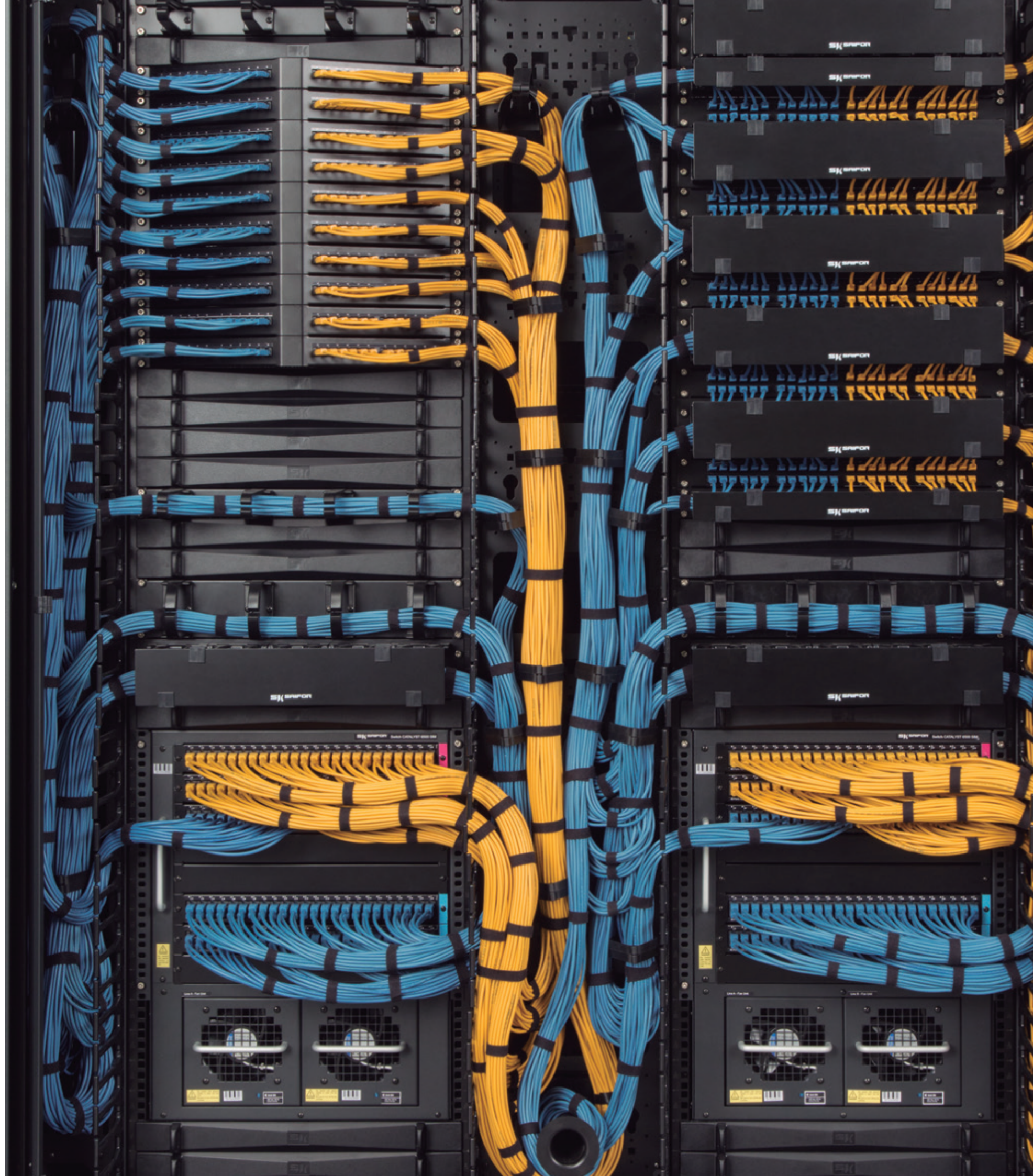
Wirex rack solutions reduce the required routing space and manage and protect high cable capacities, enhancing network reliability and reducing costs.

INSTALLATION AND MAINTENANCE

As regards its installation and maintenance, the innovation capacity of the WIREX range allows simple installation, and efficient movements and changes, reducing operating costs. Hinged, removable panels. All these features allow easy access inside the frame and reduce installation times.

THERMAL MANAGEMENT

Lower thermal stress in the system, resulting in improved reliability and lower power and space use.



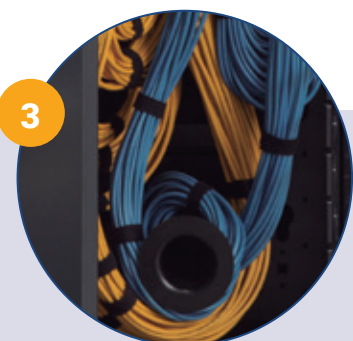
SPACE SAVING Gain in Design



Wirex optimizes cable lengths by minimizing the distances between switches and patch panels.



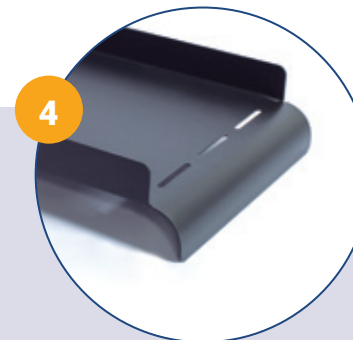
A broad and versatile range of panel and cover systems to enclose access to cabling and achieve a more aesthetic appearance; double hinged panels, easily removable. Clip doors, double hinged doors, and side panels.



Allows the maximum number of cables to be organized in the minimum space, reducing the footprint in data centers.



TOTAL CARE Safe Connections



Parts designed with non-aggressive edges to ensure a suitable cable bending radius, preventing stress and breakages.



Incorporates plastic fingers for suitable cable combing and organization, providing maximum cable care and protection and keeping the cable system structured and fully functional.



Vertical organizers with cable management fingers.



FLEXIBLE AND FULLY CONFIGURABLE

1

+

New vertical cable organizers incorporating vertical 19" units that allow side patching, leading to a drastic reduction in cable lengths and space use.

2

+

Fully scalable and configurable, with a wide range of accessories to meet all kinds of configuration requirements and allow efficient cable organization.

3

+

Doors with logos and LED backlight.

4

+

Wirex Rack allowing full integration and compatibility with SAIFOR's CUBO system, available with V2 and V3 door models.

5

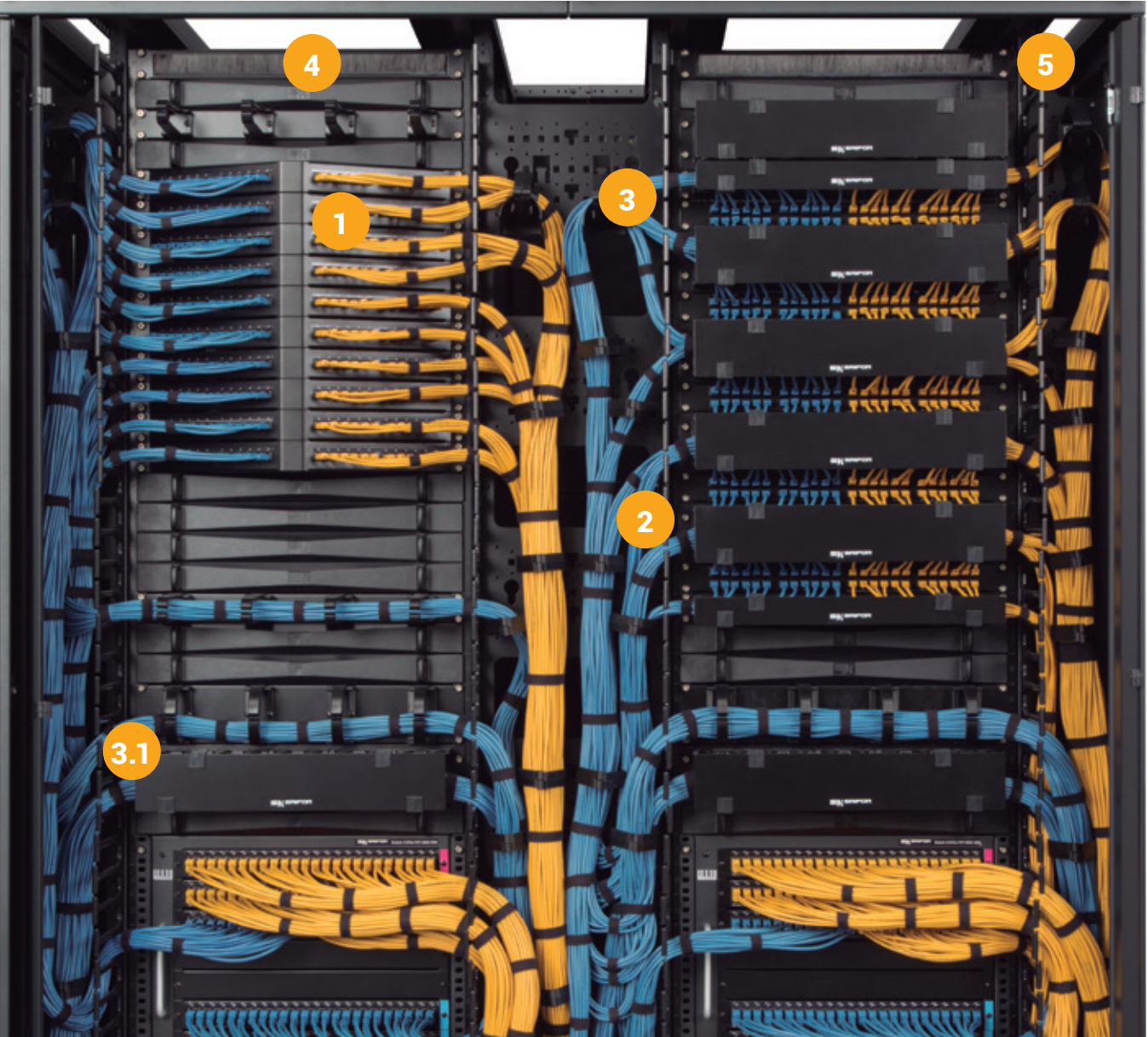
+

Doors available with a wide range of handles; with a key, pushbutton opening, electric opening, mechanical combination, with numeric keypad and with RFID card reader, software driven remote monitoring, mechanically operated, with numeric keypad and RFID card reader, software driven remote monitoring.

6

+

Allows easy removal and adding of cables. Accepts both fiber and copper cable.



Fully removable doors providing easy access to interior.



Removable doors available in double hinged or clip version. All this allows easy physical access inside the frame and reduces installation times.

ORGANIZES BETTER EASILY INSTALLED

1

+

Easier connectivity and improved cable tracing.

2

+

A range of vertical cable management organizers, available in high capacity or vertical patching versions, both of them either one-face or two-face.

3

+

Plastic accessories including rings, spools, and hook-and-clip attachments, not only allow

3.1

+

suitable organization and space optimization, but also improved appearance.

4

+

Top bridging conduit with inner rack access.

5

+

Front-rear cable communication conduits.

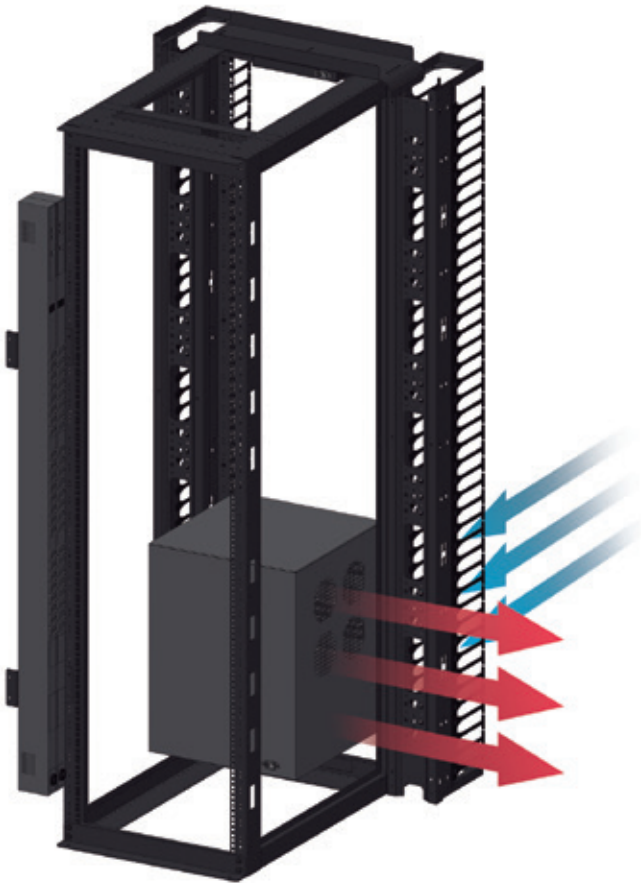
THERMAL MANAGEMENT

ENERGY SAVING

Lower thermal stress in the system, resulting in improved reliability and lower power and space use.

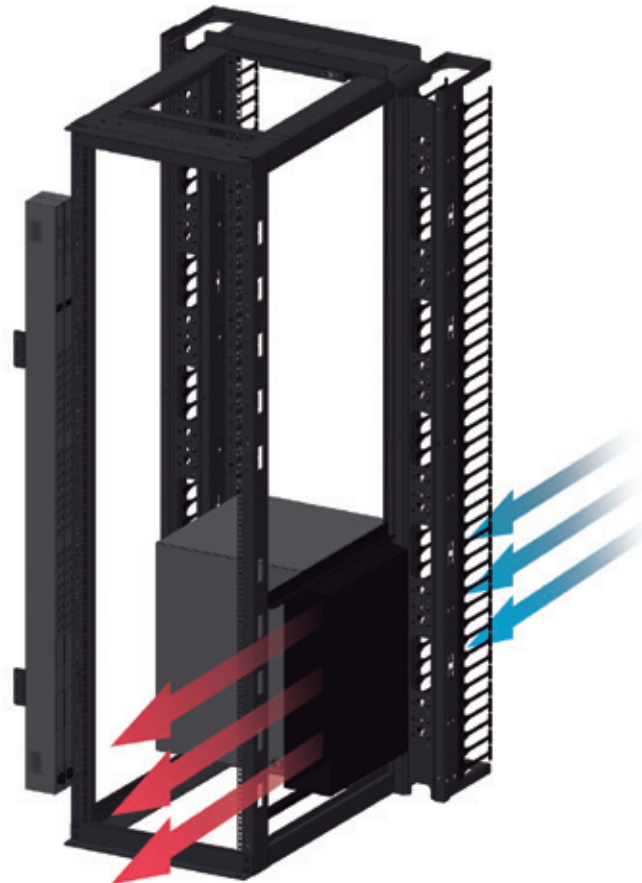


Thanks to its thermal managers, Wirex in any of its versions can redirect the hot air expelled by the switches to the rear of the rack.



⊕ WITHOUT THERMAL MANAGER

Non-use of the thermal manager leads to higher power consumption, increased costs and hazardous hot spots.



⊕ WITH THERMAL MANAGER

- Benefits:
- Temperature reduction leading to improved data speed and equipment performance.
 - Lower power consumption and costs.
 - Eliminates hot spots.



VERSIONS

The Wirex range is available in the 2-post and 4-post open frame system and in the rack version.

The rack version can be integrated and compatible with the CUBE system.

The WIREX range, in all its versions, allows the management of high-density cable systems, both copper and optic fiber. The entire WIREX system is designed to ensure electrical continuity and ground connection. It also incorporates casters to facilitate transport.

All the post versions are available in 42U and, if more equipment units need to be installed, a 47U option is available taking up the same footprint.



2 POST

The 2-post structure is the basis of the WIREX range open-frame system. It consists of a steel structure made up by two vertical steel sections serving as 19" uprights.

This system allows the installation of telecommunications equipment such as patch panels and network switches using a much smaller footprint than with a conventional cabinet, with the added advantage of a greater ventilation capacity and easier access to the cables.

Available in 2 heights: 42U and 47U; also available in two depths: 75 mm and 150 mm. The latter has a greater load-bearing capacity, allowing the installation of larger, heavier equipment.



4 POST

The 4-post structure is the basis of the WIREX range's open-frame system for configurations requiring, heavier, larger telecommunications equipment, and also needing greater protection, such as patch panels, routers and voice or network switches.

It consists of a steel structure made up by four 19" uprights and one top and one bottom structural frame. It also has a greater ventilation capability and provides easier cable access when compared with a conventional cabinet.

Available in 42U or 47U height and a choice of 4 depths (600, 800, 900, and 1000 mm), according to the type of equipment required to be installed, ensuring greater rack stability.

It is available with high capacity vertical organizers and vertical patching organizers, either 1-face or 2-face.



RACK VERSION

The WIREX rack is the ideal solution for integrating a high cable density cabinet into a row of cabinets.

The columns joining the top frame to the bottom frame are located in a central position within the cabinet, together with the uprights. This is a basic feature of the system, maximizing the space available for cables, while at the same time allowing easy cable management within the rack.

This rack is fully compatible with the ARCTIC range, as well as with the CUBO containment system.

Doors available in two models: V2 or V3.

Available in 2 heights, 42U and 47U, with 1000 or 1200mm depth.

Incorporates casters to facilitate transport.

REAR VIEW RACK VERSION



REAR VIEW 2-POST VERSION



RANGES



WIREX 2 POST

The 2-post open-frame rack system allows the installation of telecommunications equipment such as patch panels and network switches with a smaller footprint than using a standard cabinet, with the added advantage of a higher ventilation capability and easier access to the cables.

It also incorporates casters for easy transport

ACCESSORIES

- 1-face vertical cable organizer.
- 2-face vertical cable organizer.
- 1-face vertical cable organizer for patching.
- 2-face vertical cable organizer for patching.
- Top bridging conduit.
- PDU support kit.
- Caster and foot kit.
- Caster and foot kit cover.
- Trim logo.
- Horizontal 19" cable organizer with rings (1 / 2 faces).
- Vertical 19" cable organizer with fingers (1 / 2 faces).
- 19" transition tray.
- 19" cable rollup tray.
- 19" stress release bracket.
- Thermal managers.

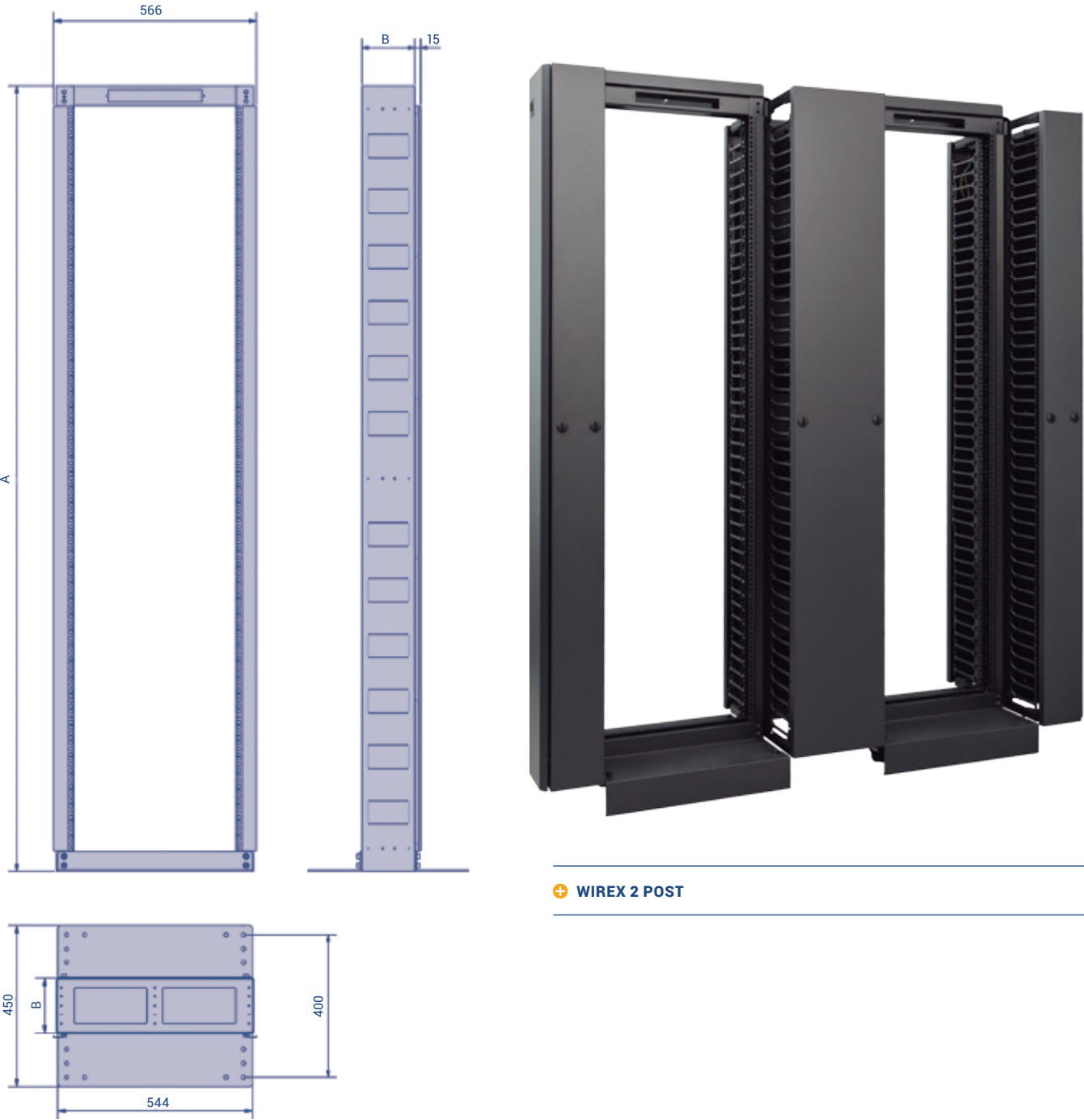
DOORS AND PANELS

- Vertical organizer side panel.
- Double hinged door (DHD).
- Clip door (CP).

FEATURES

- Available in two heights, 42U & 47U, and in two depths, 75 & 150 mm.
- Rack unit identification for easier equipment installation.
- Rack units on both sides of the frame for a greater range of installation options.
- Ready for fixing to the floor.
- Compatible with the caster and foot kit for easy transport.
- Compatible with the WIREX range vertical and horizontal organizers.
- Compatible and combinable with 4 post structure.
- Ready for installing top trim panel with printed logo or LED backlit logo.
- Compatible with thermal managers.
- Provides greater ventilation capability and easier access to cables.
- Allows management of high density cable systems, both copper and optic fiber.
- Load-bearing capacity: F75 - 460kg, F150 - 680kg.
- PDU support bracket.
- 19" horizontal cable management accessories.
- Plastic accessories.

DIMENSIONS



+ WIREX 2 POST

Part Nr	Description	Dimensions		Load-bearing capacity (kg)	Weight (kg)
		A	B		
E.0028099	WRX-POST STRUCTURE 2 P. 42U F75	1980	75	460	21
E.0028100	WRX-POST STRUCTURE 2 P. 42U F150	1980	150	680	23.5
E.0028101	WRX-POST STRUCTURE 2 P. 47U F75	2200	75	460	22
E.0028102	WRX-POST STRUCTURE 2 P. 47U F150	2200	150	680	24.5

RANGES



WIREX 4-POST

Designed for larger, heavier equipment. The 4-post open-frame system has a greater ventilation capability and provides easier cable access than a conventional cabinet.

It also incorporates casters for easy transport.

ACCESSORIES

- 1-face vertical cable organizer.
- 2-face vertical cable organizer.
- 1-face vertical cable organizer for patching.
- 2-face vertical cable organizer for patching.
- Top bridging conduit.
- Front-rear bridging conduit.
- Vertical cable guide conduit.
- Central vertical cover.
- PDU Support kit.
- Caster and foot kit.
- Printed/LED logo.
- Horizontal 19" cable organizer with rings (1 / 2 faces).
- Horizontal 19" cable organizer with fingers (1 / 2 faces).
- 19" transition tray.
- 19" cable rollout tray.
- 19" stress release bracket.
- Thermal managers
- Upper cable entry deflector.

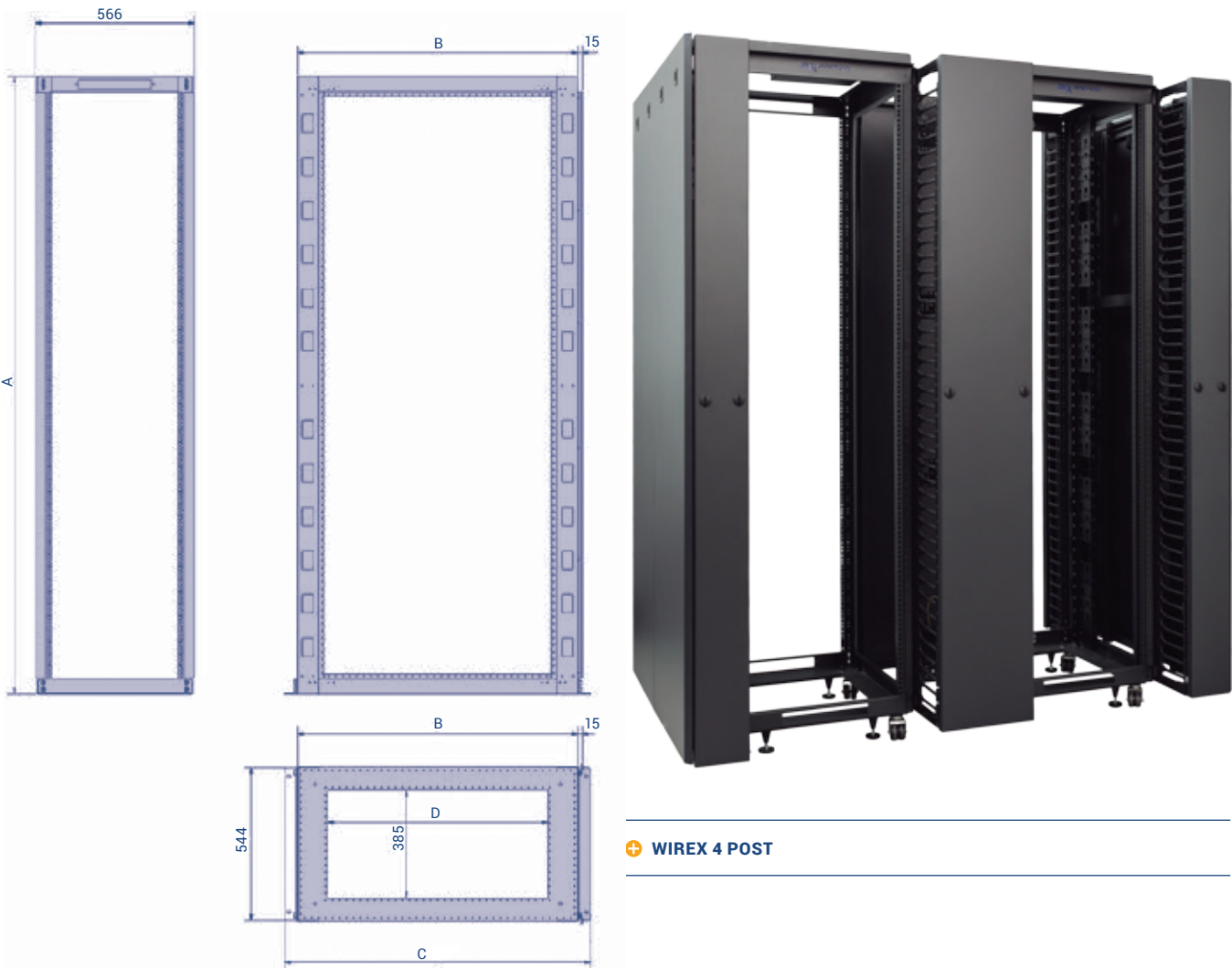
DOORS AND PANELS

- Vertical organizer side panel.
- Double hinged door (DHD).
- Clip door (CP).

FEATURES

- Available in two heights, 42U & 47U, and four depths, 600, 800, 900 & 1000 mm. • High load-bearing capacity, up to 910 kg.
- Open top and bottom frames for better cable entry.
- More stable than a 2-post rack. Rack unit identification for easier installation.
- Rack units on both sides of the frame for a greater range of installation options. • Ready for fixing to the floor.
- Compatible with the caster and foot kit.
- Compatible with the WIREX range vertical and horizontal organizers.
- Compatible and combinable with 2 post structure.
- Ready for installation of top trim panel with printed logo or LED backlit logo.
- Compatible thermal managements.
- Suitable for configurations requiring larger telecommunications equipment and at the same time requiring greater protection.

DIMENSIONS



WIREX 4 POST

Part Nr	Description	Dimensions				Load-bearing capacity (kg)	Weight (kg)
		A	B	C	D		
E.0028103	WRX-POST STRUCTURE 4 P. 42U F600	1980	600	690	385	910	32
E.0028104	WRX-POST STRUCTURE 4 P. 42U F800	1980	800	890	585	910	34
E.0028105	WRX-POST STRUCTURE 4 P. 42U F900	1980	900	990	685	910	35
E.0028106	WRX-POST STRUCTURE 4 P. 42U F1000	1980	1000	1090	785	910	36
E.0028107	WRX-POST STRUCTURE 4 P. 47U F600	2200	600	690	385	910	34
E.0028108	WRX-POST STRUCTURE 4 P. 47U F800	2200	800	890	585	910	36
E.0028109	WRX-POST STRUCTURE 4 P. 47U F900	2200	900	990	685	910	37
E.0028110	WRX-POST STRUCTURE 4 P. 47U F1000	2200	1000	1090	785	910	38

RANGES

WIREX RACK



The rack structure is the base of the WIREX rack system. Compatible with the ARCTIC range and the CUBO system. When two or more structures are joined together, the absence of columns on the corners provides the perfect space for cable entry inside the rack. The 19" uprights supplied with the base structure have identification codes on the RU units for easy equipment installation.

It also incorporates casters for easy transport.

ACCESSORIES

- Cable entry deflector.
- PDU support bracket.
- Vertical cable guide conduit.
- Array joining kit.
- High cable density management vertical organizers.
- High cable density management vertical organizers for patching.
- Front-rear bridging conduit.
- Horizontal 19" cable organizer with rings (1 / 2 faces)
- Horizontal 19" cable organizer with fingers (1 / 2 faces)
- 19" transition tray.
- 19" cable rollout tray.
- 19" stress relief bracket.
- Cable entry deflectors.
- Vertical cable guide conduit.
- 19" cable accessories.
- Plastic organizer accessories.

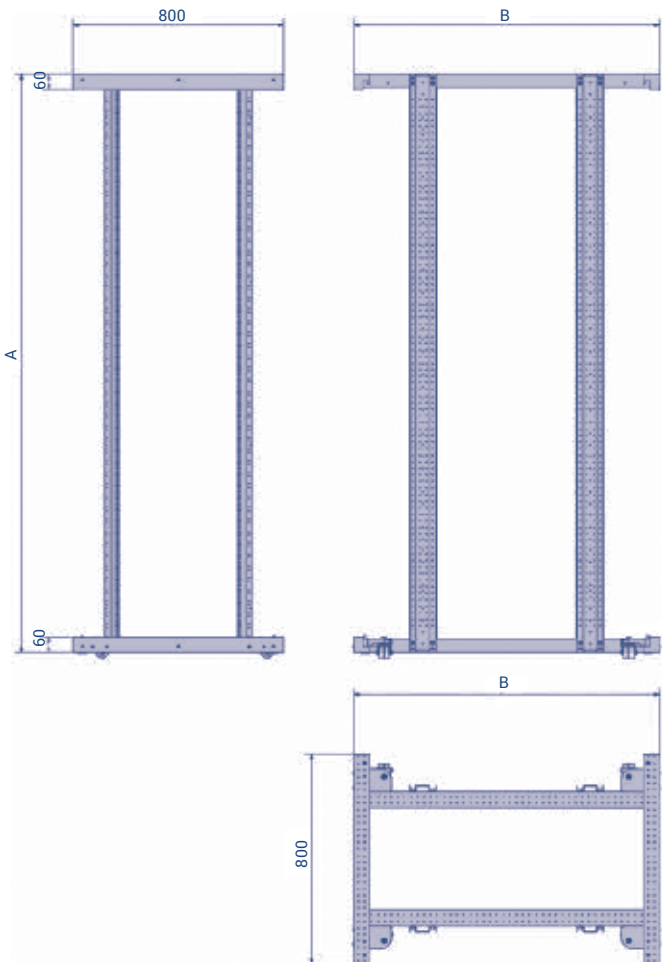
DOORS AND PANELS

- Vertical organizer hinged covers.
- Standard side panel.
- Double-hinged side panel.
- Standard and double door:
 - ARTIC V3 Version.
 - ARTIC V2 Version.
- The V3 door offers a wide range of optional locks: key, button opening, mechanical combination, mixed, electric opening and remote monitoring system.

FEATURES

- Available in 2 depths, 1000 mm & 1200 mm.
- Available in 2 heights, 42U & 47U.
- Adjustable depth 19" uprights.
- Identification code on rack units for easy assembly.
- Fully open top and bottom frame.
- Fitted with casters and feet.
- High load bearing capacity, up to 1200 kg.
- Structure with no columns on the corners for easy access to interior.
- Joining adjacent structures allows large cable entries.
- Compatible with the ARCTIC range and the CUBO system. Aisle containment system by SAIFOR.
- Compatible with standard and double doors.
- Compatible with standard side panels.
- Compatible with hinged side panels.
- Compatible with vertical organizers.

DIMENSIONS



WIREX RACK

Part Nr	Description	Dimensions		Load-bearing capacity (kg)	Weight (kg)
		A	B		
E.0028167	WRX-RACK STRUCTURE 42U F1000	2000	961	1200	32
E.0028168	WRX-RACK STRUCTURE 42U F1200	2000	1161	1200	34
E.0028169	WRX-RACK STRUCTURE 47U F1000	2200	961	1200	35
E.0028170	WRX-RACK STRUCTURE 47U F1200	2200	1161	1200	36

01 TRIM WITH LOGO



Upper front trim with corporate logo. Available in printed or backlit version.

02 CASTER AND FOOT KIT



Caster kit for frame transport. Incorporates feet for secure positioning and load bearing. Raises rack by 90 mm.

03 CASTER AND FOOT KIT COVER



Trim cover to conceal the casters and feet once the 2 post rack is in its final position.

04 STRESS RELIEF BRACKET

+ Location back.

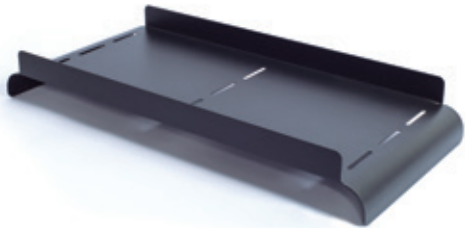


The stress relief bracket neutralizes stress generated in the cables. It is fitted on the rear of the uprights, behind each patching panel.



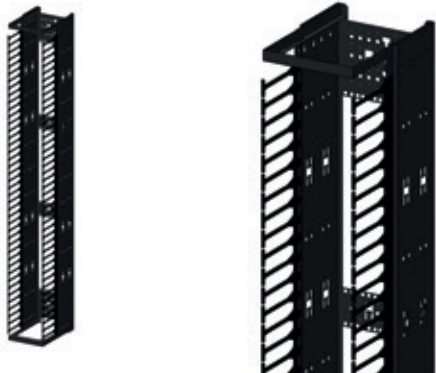
ACCESSORIES
2 POST RANGE

05 TOP BRIDGING CONDUIT



Allows communication between two vertical organizers. Incorporates a 25mm transition radius for smoother cable entry into the vertical organizer. Available in two depths: 175 and 275 mm.

06 VERTICAL ORGANIZER



The vertical cable organizer is a high-capacity conduit installed on the side of the rack for high density cable management and protection. It incorporates plastic fingers distributed throughout its height to ensure the correct cable distribution to each unit. Compatible with a wide range of accessories.

07 2 POST PDU SUPPORT KIT

+ Location back.



Support for installation of Server Technology PDUs on rear side. 100 mm depth adjustment. Allows installation of up to 2 PDUs together.

01 TRIM WITH LOGO



Upper front trim with corporate logo. Available in printed or backlit version.

02 FRONT-REAR CONDUIT



The front-rear bridging conduit allows communication between two vertical organizers. The conduit incorporates a radius for smoother cable entry.

03 CASTER AND FOOT KIT



Caster kit for 4-post frame transport. Incorporates feet for secure positioning and load bearing of equipment.

04 CASTER AND FOOT KIT COVER



Trim cover to conceal the casters and feet once the 4-post rack is in its final position.

05 CABLE ENTRY DEFLECTOR

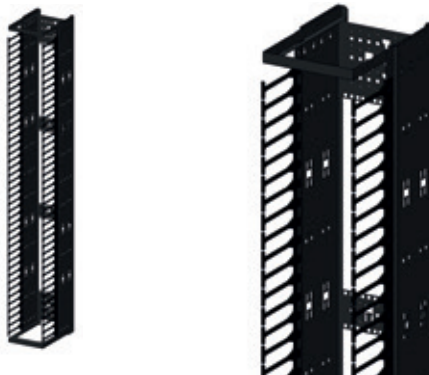


The deflector is mounted on the top part of the 4-post rack structure and ensures smooth entry of the cables into the rack.



ACCESSORIES
4 POST RANGE

06 VERTICAL ORGANIZER



The vertical cable organizer is a high capacity conduit installed on the side of the rack for high density cable management and protection. It incorporates plastic fingers distributed throughout its height to ensure the correct cable distribution to each unit. Compatible with a wide range of accessories.

07 VERTICAL CABLE GUIDE CONDUIT



Allows cable organization within the 4-post rack. Designed for fitting rings, spools, for direct tying and for installation of Server Technology PDUs. The side flanges allow the installation of fingers.

08 4 POST PDU SUPPORT KIT

+ Location back.



Support for installation of Server Technology PDUs on rear. Allows installation of up to 2 PDUs together.

01 TOP DEFLECTOR



The deflector is mounted on the top part of the cabinet structure and ensures a non-aggressive, smooth entry of the cables into the rack.

02 ARRAY JOINING KIT



The array joining kit is used for mounting onto two WIREX rack structures. It can also be used to join a WIREX rack structure to an ARCTIC rack structure.

03 VERTICAL CABLE GUIDE CONDUIT



Allows cable organization within the rack. Designed for fitting rings, spools, direct tying and for installation of Server Technology PDUs. The side flanges allow the installation of fingers.

04 STRESS RELIEF BRACKET



The stress relief bracket neutralizes stress generated in the cables. It is fitted on the rear of the uprights, behind each patching panel.



ACCESSORIES
RACK RANGE

05 BRIDGING CONDUIT



The front-rear bridging conduit allows communication between two vertical organizers, one mounted on the front and one on the rear of the WIREX rack.

06 VERTICAL ORGANIZER



The vertical cable organizer is a high capacity conduit installed on the side of the rack for high density cable management and protection. It incorporates plastic fingers distributed throughout its height to ensure the correct cable distribution to each unit. Compatible with a wide range of accessories.

07 RACK PDU SUPPORT KIT



Support for installation of Server Technology PDUs on rear side. 100 mm depth adjustment. Allows installation of up to 2 PDUs together.

PANELS AND DOORS

+ SIDE PANEL FOR POSTS

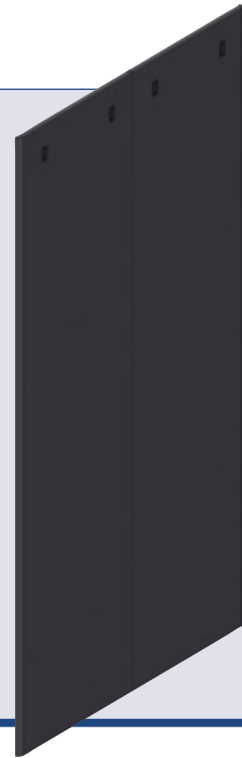
The side panel is fitted on the vertical organizers located at the end of a row. Its purpose is to enclose the assembly, providing protection and a more finished appearance.

No tools are required for the installation and removal of the panel.

To open, slide downward and tilt the panel to remove it.

Available in 2 heights: 42U & 47U.

In the 4 post-version they are split into 2 for easier handling; these panels are available in two heights: 42U & 47U; and 4 depths: 600, 800, 900, 1000 mm.



+ RACK SIDE PANEL

The side panel is fitted on the side of the cabinet at the end of the row. Its purpose is to enclose the assembly, providing protection and a more finished appearance. It can also be used as an intermediate partition between two cabinets.

The panel incorporates an optional lock.

Available in 2 versions: standard and hinged. The hinged panel allows easier installation and maintenance. It can be opened on one side, on either side or easily removed if required.



PANELS AND DOORS

+ DOORS FOR POSTS

There are 2 door types: Double-hinged door and clip door.

The doors are fitted onto the front and/or rear of the vertical organizer.

This door can open to the left or to the right, as required, and to facilitate working inside the vertical organizer it can be removed completely without any tools required.

The door provides a more finished overall appearance, as well as greater cable protection.

Available for 42U & 47U, and several widths: 150, 200, 250 & 300mm.

The clip door is split into two for easier installation and removal.

+ DOORS FOR RACKS

The ventilated doors for the WIREX rack range are available in two models: V2 & V3.

The doors are available in the standard version, with a single panel, and in the double version, with two panels. The two-panel version is perfect for narrow aisles with less space.

The V3 door comes with a wide range of lock options:

- 1. Standard; with key
- 2. Pushbutton opening
- 3. Electric opening
- 4. Mechanical combination, with or without key.
- 5. Remote management: RFID, with or without numeric keypad and with software allowing remote monitoring, opening authorizations, closed or open times, etc.



COMMON ACCESSORIES

+ HORIZONTAL 19" ORGANIZER WITH RINGS



Horizontal ring organizers are mounted directly along the 19" of the rack for

horizontal cable distribution.

+ HORIZONTAL 19" ORGANIZER" WITH FINGERS



Finger-type horizontal organizers are mounted directly along the 19" of the rack for horizontal and vertical cable distribution. The organizer has a hinged

cover with a clip system that allows upward or downward opening and cover removal if required. The two-face version allows cabling in front of and behind the rack.

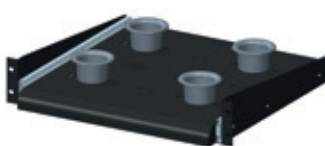
+ TRANSITION TRAY



The transition tray is mounted directly along the 19" of the rack and allows guiding cables from one side to the other. The top transition

version is used when the cables cross the top of the rack, while the bottom transition version is used when the cables cross the bottom of the rack.

+ 19" CABLE ROLLUP TRAY



The cable rollup tray is mounted directly along the 19" of the rack. The tray has 4 rollup spools to take up the

extra length of cable, especially optic fiber. In addition the tray is extendable for easy handling.

+ 19" STRESS RELIEF BRACKET



The stress relief bracket neutralizes stress generated in the cables.

It is fitted on the rear of the uprights, behind each patching panel.

+ PLASTIC RING KIT



The rings are plastic elements to assist cable distribution within the

vertical organizers.

+ SPOOL KIT



Spools are plastic components used to roll up the cable and assist cable organization. The spool has a 50 mm

diameter to accommodate both copper and optic fiber cable.

+ FABRIC CABLE TIE KIT



Fabric cable ties are perfect for tying both copper and optic fiber data

cables. They are not aggressive and can be reused.

+ CLAMP RING KIT



The clamp ring kit has a locking system that ensures the cables cannot come loose; it is made of a more flexible material, allowing easy installation of new cables. The radius clip, which fits

onto the clamp ring, provides a support radius for the cables. It is very useful when cables have to change direction, preventing them from resting on a sharp edge.

+ THERMAL MANAGERS



WIREX in any of its versions can redirect the hot air given off by the switches

toward the rear of the frame thanks to its thermal managers.

+ VERTICAL ORGANIZER



The vertical cable organizer is a large-capacity conduit for cable management and protection in high density applications.

The inside of the organizer is designed to accommodate a wide range of accessories.

To distribute the cables toward the front of the rack, the organizer is fitted with plastic fingers distributed across its entire height. The fingers have rounded edges to avoid damaging the cables.

The patching version incorporates RU units arranged in a vertical direction, which can be used for installing "patch panels" inside the organizer. Available in 2/4 post and 1/2 face versions, and rack version.

+ TOP BRIDGING CONDUIT



Allows communication between two vertical organizers. Incorporates a 25mm transition radius for smoother cable entry

into the vertical organizer. Available in two depths: 175 and 275 mm.

TECHNICAL DATA

CAPTION

Common capacity for all accessories with fingers for ethernet cables.

Finger cable filling capacity		Maximum filling 50% of useful area		
	Useful Area (mm2)	Cat.5e (5.7mm)	Cat.6 (6.1mm)	Cat.6e (7.6mm)
Finger	4339	85	74	48

* Load-bearing capacity = LBC

+ 2 POST STRUCTURE

Part Nr	Version	Dimensions (HeightxWidthxDepth)	LBC (kg)	Weight (kg)
E.0028099	42U F75	1980x550x450	460 kg	21
E.0028100	42U F150	1980x550x450	680 kg	23.5
E.0028101	47U F75	2200x550x450	460 kg	22
E.0028102	47U F150	2200x550x450	680 kg	24.5



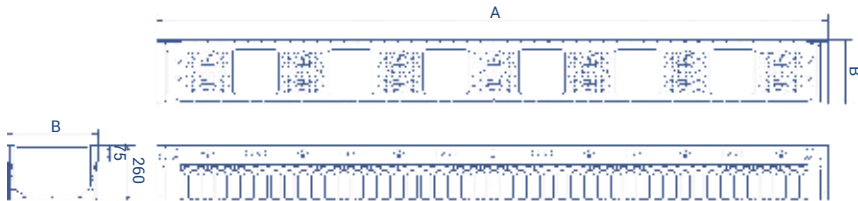
+ 4 POST STRUCTURE

Part Nr	Version	Dimensions (HeightxWidthxDepth)	LBC (kg)	Weight (kg)
E.0028103	42U F600	1980x550x690	910 kg	32
E.0028104	42U F800	1980x550x890	910 kg	34
E.0028105	42U F900	1980x550x990	910 kg	35
E.0028106	42U F1000	1980x550x1090	910 kg	36
E.0028107	47U F600	2200x550x690	910 kg	34
E.0028108	47U F800	2200x550x890	910 kg	36
E.0028109	47U F900	2200x550x990	910 kg	37
E.0028110	47U F1000	2200x550x1090	910 kg	38



+ 1-FACE VERTICAL ORGANIZER - 2/4 POST

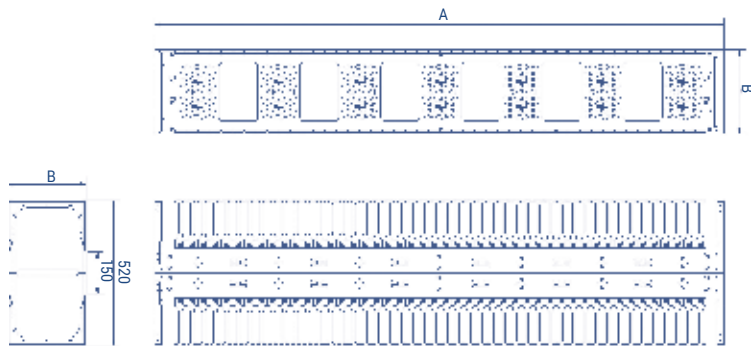
Part Nr	Version	Dimensions A B	Useful Area (mm2)	Recommended Filling (25% useful area)			Maximum Filling (50% useful area)			Weight (kg)
				Cat.5e (5.7mm)	Cat.6 (6.1mm)	Cat.6e (7.6mm)	Cat.5e (5.7mm)	Cat.6 (6.1mm)	Cat.6e (7.6mm)	
E.0028111	42U A150	1970 150	31845	312	272	175	624	545	351	10
E.0028112	42U A200	1970 200	43845	430	375	242	859	750	483	10.5
E.0028113	42U A250	1970 250	55845	547	478	308	1094	955	616	11.2
E.0028114	42U A300	1970 300	67845	665	580	374	1329	1161	748	11.8
E.0028115	47U A150	2190 150	31845	312	272	175	624	545	351	10.9
E.0028116	47U A200	2190 200	43845	430	375	242	859	750	483	11.5
E.0028117	47U A250	2190 250	55845	547	478	308	1094	955	616	12.2
E.0028118	47U A300	2190 300	67845	665	580	374	1329	1161	748	12.9



+ 2-FACE VERTICAL ORGANIZER - 2/4 POST

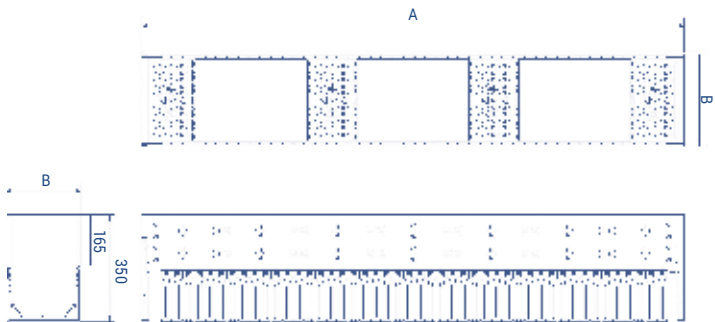
Part Nr	Version	Dimensions A B	Useful Area (mm2)	Recommended Filling (25% useful area)			Maximum Filling (50% useful area)			Weight (kg)
				Cat.5e (5.7mm)	Cat.6 (6.1mm)	Cat.6e (7.6mm)	Cat.5e (5.7mm)	Cat.6 (6.1mm)	Cat.6e (7.6mm)	
E.0028119	42U A150	1970 150	(31845)x2	312	272	175	624	545	351	(kg)
E.0028120	42U A200	1970 200	(43845)x2	430	375	242	859	750	483	21
E.0028121	42U A250	1970 250	(55845)x2	547	478	308	1094	955	616	22.4
E.0028122	42U A300	1970 300	(67845)x2	665	580	374	1329	1161	748	23.6
E.0028123	47U A150	2190 150	(31845)x2	312	272	175	624	545	351	21.8
E.0028124	47U A200	2190 200	(43845)x2	430	375	242	859	750	483	23
E.0028125	47U A250	2190 250	(55845)x2	547	478	308	1094	955	616	24.4
E.0028126	47U A300	2190 300	(67845)x2	665	580	374	1329	1161	748	25.8

* The filling capacities are the same for the front and rear



+ 1-FACE VERTICAL ORGANIZER FOR PATCHING - 2/4 POST

Part Nr	Version	Dimensions A B	Extra Unit	Useful Area (mm2)	Recommended Filling (25% useful area)			Maximum Filling (50% useful area)			Weight (kg)
					Cat.5e (5.7mm)	Cat.6 (6.1mm)	Cat.6e (7.6mm)	Cat.5e (5.7mm)	Cat.6 (6.1mm)	Cat.6e (7.6mm)	
E.0028540	42U A150	1970 150	9U	60946	597	521	336	1194	1043	672	12.6
E.0028541	42U A200	1970 200	12U	72946	715	624	402	1429	1248	804	13
E.0028542	42U A250	1970 250	15U	84946	832	727	468	1664	1453	936	13.5
E.0028543	42U A300	1970 300	18U	96946	950	829	534	1900	1659	1069	13.9
E.0028544	47U A150	2190 150	9U	60946	597	521	336	1194	1043	672	14.1
E.0028545	47U A200	2190 200	12U	72946	715	624	402	1429	1248	804	14.6
E.0028546	47U A250	2190 250	15U	84946	832	727	468	1664	1453	936	15.2
E.0028547	47U A300	2190 300	18U	96946	950	829	534	1900	1659	1069	15.7



+ 2-FACE VERTICAL ORGANIZER FOR PATCHING - 2/4 POST

Part Nr	Version	Dimensions		Extra Unit	Weight (kg)
		A	B		
E.0028548	42U A150	1970	150	9U	19.6
E.0028549	42U A200	1970	200	12U	20.1
E.0028550	42U A250	1970	250	15U	20.6
E.0028551	42U A300	1970	300	18U	21.1
E.0028552	47U A150	2190	150	9U	21.8
E.0028553	47U A200	2190	200	12U	22.4
E.0028554	47U A250	2190	250	15U	23
E.0028555	47U A300	2190	300	18U	23.6

+ FRONT CABLE FILLING CAPACITY

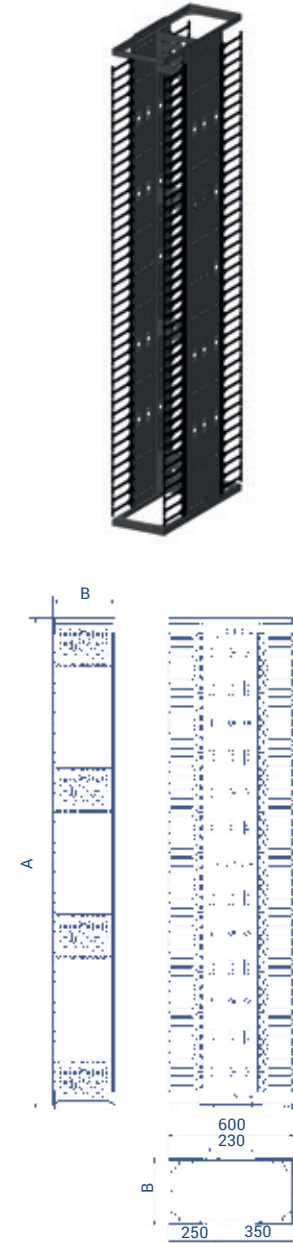
Part Nr	Useful Area (mm2)	Recommended Filling (25% useful area)			Maximum Filling (50% useful area)		
		Cat.5e (5.7mm)	Cat.6 (6.1mm)	Cat.6e (7.6mm)	Cat.5e (5.7mm)	Cat.6 (6.1mm)	Cat.6e (7.6mm)
E.0028548	60946	597	521	336	1194	1043	672
E.0028549	72946	715	624	402	1429	1248	804
E.0028550	84946	832	727	468	1664	1453	936
E.0028551	96946	950	829	534	1900	1659	1069
E.0028552	60946	597	521	336	1194	1043	672
E.0028553	72946	715	624	402	1429	1248	804
E.0028554	84946	832	727	468	1664	1453	936
E.0028555	96946	950	829	534	1900	1659	1069

+ REAR CABLE FILLING CAPACITY

Part Nr	Useful Area (mm2)	Recommended Filling (25% useful area)			Maximum Filling (50% useful area)		
		Cat.5e (5.7mm)	Cat.6 (6.1mm)	Cat.6e (7.6mm)	Cat.5e (5.7mm)	Cat.6 (6.1mm)	Cat.6e (7.6mm)
E.0028548	31249	306	267	172	612	535	344
E.0028549	43246	424	370	238	847	740	477
E.0028550	55246	541	473	304	1083	945	609
E.0028551	67246	659	575	371	1318	1151	741
E.0028552	31249	306	267	172	612	535	344
E.0028553	43246	424	370	238	847	740	477
E.0028554	55246	541	473	304	1083	945	609
E.0028555	67246	659	575	371	1318	1151	741

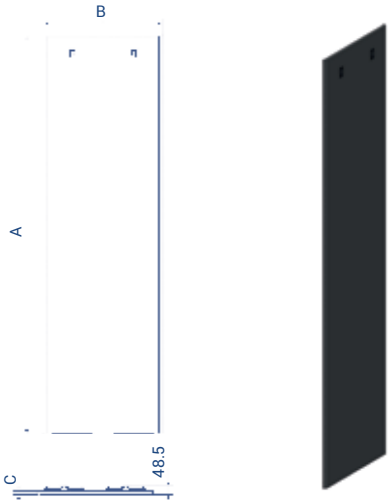
+ 1-FACE VERTICAL ORGANIZER SIDE PANEL - 2/4 POST

Part Nr	Version	Dimensions			Weight (kg)
		A	B	B	
E.0028127	42U PC	1965	260	17	4.7
E.0028128	47U PC	2185	260	17	5.3
E.0028129	42U PBD	1965	287	20	5.2
E.0028130	47U PBD	2185	287	20	5.8



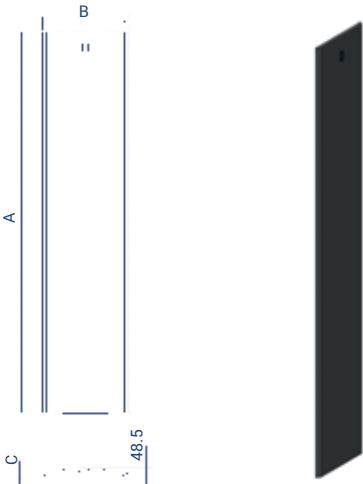
+ 2-FACE VERTICAL ORGANIZER SIDE PANEL - 2/4 POST

Part Nr	Version	Dimensions			Weight (kg)
		A	B	C	
E.0028131	42U PC	1965	525	17	9.1
E.0028132	47U PC	2185	525	17	10.1
E.0028133	42U PBD	1965	592	20	10.3
E.0028134	47U PBD	2185	592	20	11.3



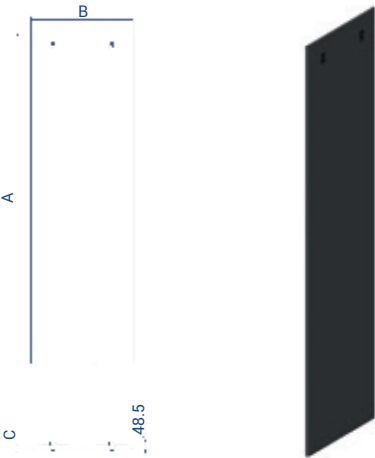
+ 1-FACE VERTICAL ORGANIZER SIDE PANEL FOR PATCHING - 2/4 POST

Part Nr	Version	Dimensions			Weight (kg)
		A	B	C	
E.0028143	42U PC	1965	350	17	6.2
E.0028144	47U PC	2185	350	17	6.8
E.0028145	42U PBD	1965	377	20	6.6
E.0028146	47U PBD	2185	377	20	7.4



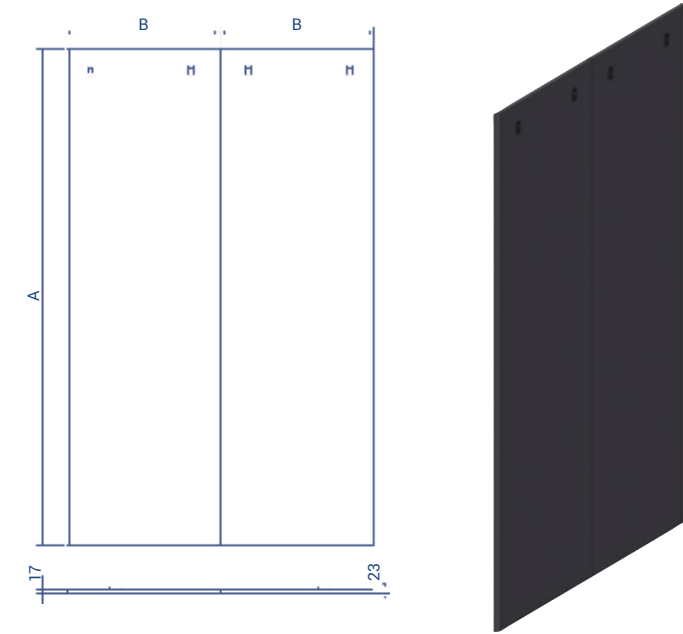
+ 2-FACE VERTICAL ORGANIZER SIDE PANEL FOR PATCHING - 2/4 POST

Part Nr	Version	Dimensions			Weight (kg)
		A	B	C	
E.0028556	42U PC	1965	605	17	10.4
E.0028557	47U PC	2185	605	17	12.9
E.0028558	42U PBD	1965	672	20	11.5
E.0028559	47U PBD	2185	672	20	12.7



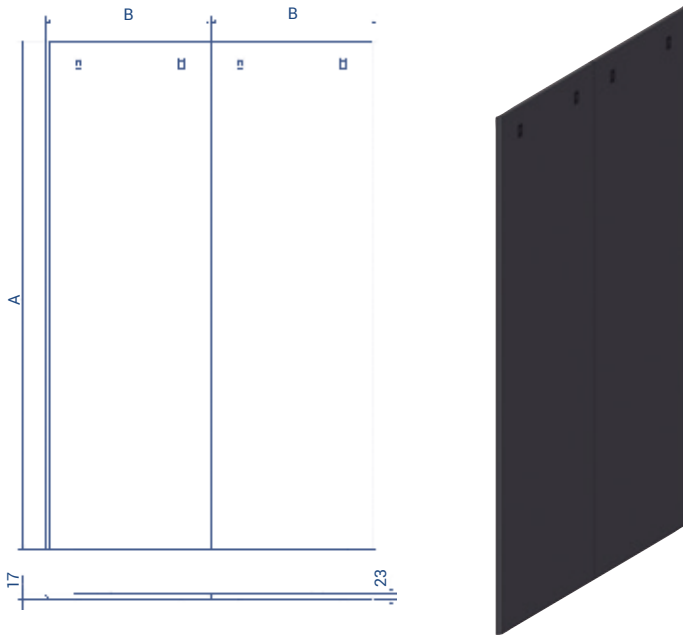
+ VERTICAL ORGANIZER SIDE PANEL (PC) - 4 POST

Part Nr	Version	Dimensions		Weight (kg)
		A	B	
E.0028560	42U F600	1965	486	17.6
E.0028561	42U F800	1965	586	21
E.0028562	42U F900	1965	636	22.8
E.0028563	42U F1000	1965	686	24.4
E.0028564	47U F600	2185	486	19.4
E.0028565	47U F800	2185	586	23,2
E.0028566	47U F900	2185	636	25,2
E.0028567	47U F1000	2185	686	27



+ VERTICAL ORGANIZER SIDE PANEL (PBD) - 4 POST

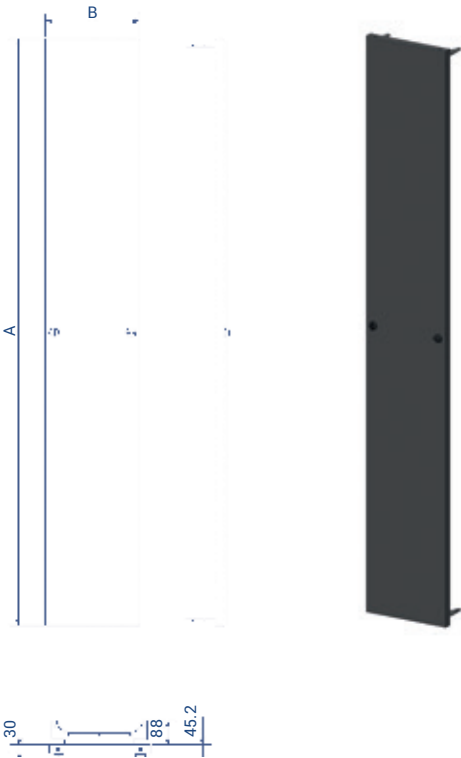
Part Nr	Version	Dimensions		Weight (kg)
		A	B	
E.0028568	42U F600	1965	520	19
E.0028569	42U F800	1965	620	22.4
E.0028570	42U F900	1965	670	24
E.0028571	42U F1000	1965	720	25.8
E.0028572	47U F600	2185	520	20.8
E.0028573	47U F800	2185	620	24.6
E.0028574	47U F900	2185	670	26.6
E.0028575	47U F1000	2185	720	28.4



+ DOUBLE HINGED DOOR (PBD) - 2/4 POST

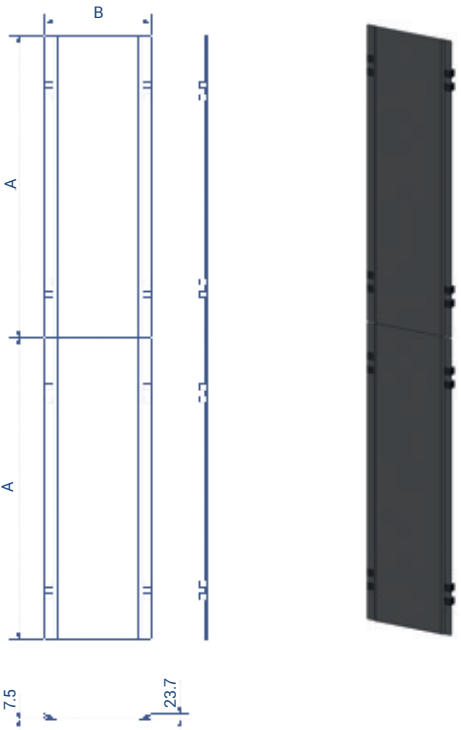
Part Nr	Version	Dimensions		Weight	Weight
		A	B	Door only (kg)	Total* (kg)
E.0028135	47U A150	2185	145	5.9	6.3
E.0028136	47U A300	2185	295	8.7	9.7
E.0028137	47U A200	2185	195	6.8	7.4
E.0028138	47U A250	2185	245	7.8	8.6
E.0028139	42U A150	1965	145	5.3	5.7
E.0028140	42U A300	1965	295	7.9	8.9
E.0028141	42U A200	1965	195	6.2	6.8
E.0028142	42U A250	1965	245	7.0	7.8

* With fixing plates



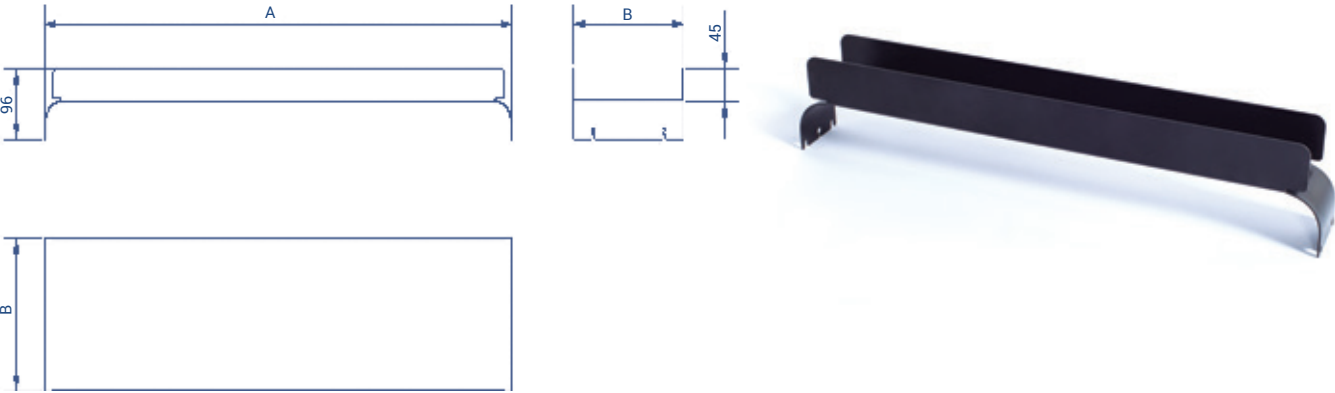
+ CLIP DOOR (PC) - 2/4 POST

Part Nr	Version	Dimensions		Weight
		A	B	ind. door (kg)
E.0028576	42U A150	975	150	0.7
E.0028577	42U A200	975	200	0.9
E.0028578	42U A250	975	250	1.1
E.0028579	42U A300	975	300	1.3
E.0028580	47U A150	1087	150	0.8
E.0028581	47U A200	1087	200	1
E.0028582	47U A250	1087	250	1.2
E.0028583	47U A300	1087	300	1.4



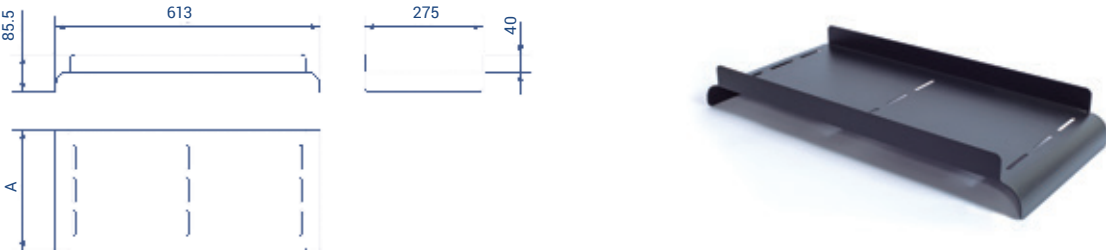
+ FRONT-REAR BRIDGING CONDUIT - 4 POST

Part Nr	Version	Dimensions		Recommended Filling (25% useful area)			Maximum Filling (50% useful area)			Weight (kg)
				Cat.5e (5.7mm)	Cat.6 (6.1mm)	Cat.6e (7.6mm)	Cat.5e (5.7mm)	Cat.6 (6.1mm)	Cat.6e (7.6mm)	
E.0028147	A150 F600	2349	478	23	20	13	46	40	26	0.8
E.0028148	A150 F800	2349	678	23	20	13	46	40	26	1.2
E.0028149	A150 F900	2349	778	23	20	13	46	40	26	1.3
E.0028150	A150 F1000	2349	878	23	20	13	46	40	26	1.5
E.0028151	A200 F600	4524	478	44	39	25	89	77	50	1.2
E.0028152	A200 F800	4524	678	44	39	25	89	77	50	1.6
E.0028153	A200 F900	4524	778	44	39	25	89	77	50	1.8
E.0028154	A200 F1000	4524	878	44	39	25	89	77	50	2.1
E.0028584	A250 F600	6699	478	66	57	37	131	115	74	1.5
E.0028585	A250 F800	6699	678	66	57	37	131	115	74	2.1
E.0028586	A250 F900	6699	778	66	57	37	131	115	74	2.3
E.0028587	A250 F1000	6699	878	66	57	37	131	115	74	2.6
E.0028588	A300 F600	8874	478	87	76	49	174	152	98	1.8
E.0028589	A300 F800	8874	678	87	76	49	174	152	98	2.5
E.0028590	A300 F900	8874	778	87	76	49	174	152	98	2.8
E.0028591	A300 F1000	8874	878	87	76	49	174	152	98	3.2



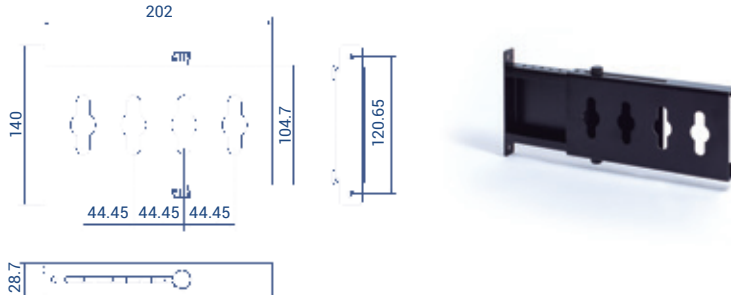
+ TOP BRIDGING CONDUIT - 2/4 POST

Part Nr	Version	Useful Area (mm2)	Dimensions A	Weight (kg)	Recommended Filling (25% useful area)			Maximum Filling (50% useful area)		
					Cat.5e (5.7mm)	Cat.6 (6.1mm)	Cat.6e (7.6mm)	Cat.5e (5.7mm)	Cat.6 (6.1mm)	Cat.6e (7.6mm)
E.0028155	F275	10472	275	2.7	103	90	58	205	179	115
E.0028156	F175	6622	175	1.9	65	57	36	130	113	73



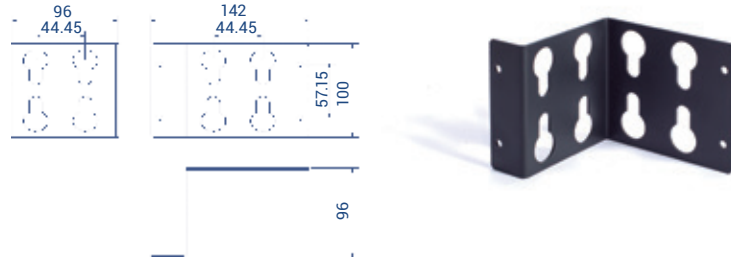
+ PDU SUPPORT KIT - 2 POST

Part Nr	Version	Weight (kg)
E.0028157	2 post	2x1.1



+ PDU SUPPORT KIT - 4 POST

Part Nr	Version	Weight (kg)
E.0028158	4 post	2x0.3



+ 90MM CASTER AND FOOT KIT - 2 POST

Part Nr	Version	Weight (kg)
E.0028159	2 post	2x2.3



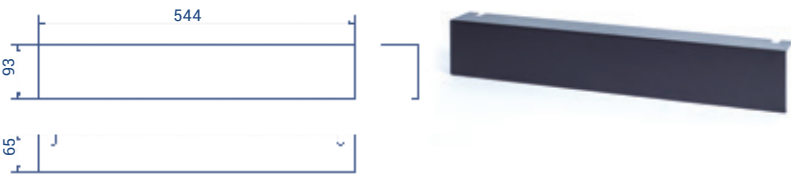
+ 90MM CASTER AND FOOT KIT - 4 POST

Part Nr	Version	Weight (kg)
E.0028160	4 post	2x1.8



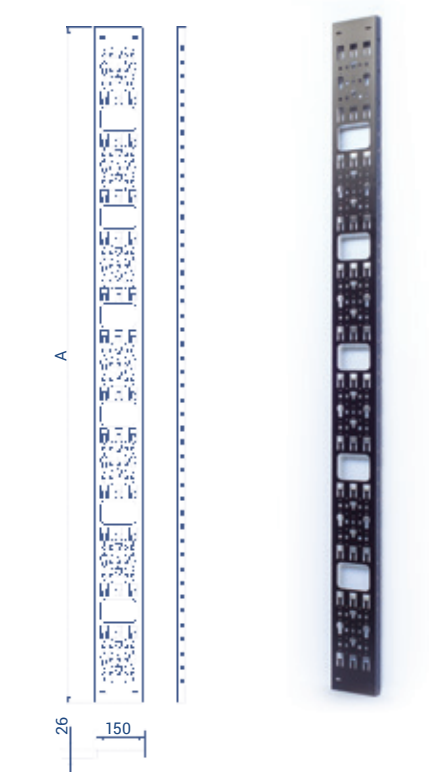
+ 90MM CASTER AND FOOT KIT COVER - 2/4 POST

Part Nr	Version	Weight (kg)
E.0028596	2/4 post	2x1.1



+ VERTICAL CABLE GUIDE CONDUIT - 4 POST

Part Nr	Version	Dimensions A	Weight (kg)
E.0028161	42U	1915	3.4
E.0028162	47U	2135	3.8



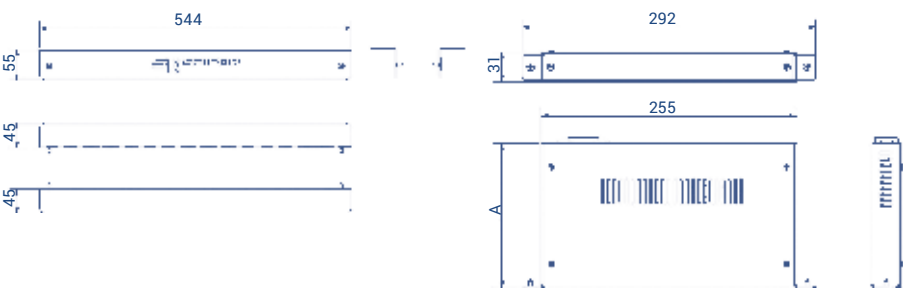
+ CENTRAL VERTICAL COVER - 4 POST

Part Nr	Version	Dimensions		Weight (kg)
		A	B	
E.0028163	42U A150	1978	148	3.5
E.0028164	42U A200	1978	198	4.4
E.0028165	42U A250	1978	248	5.2
E.0028166	42U A300	1978	298	6.1
E.0028592	47U A150	2198	148	3.9
E.0028593	47U A200	2198	198	4.8
E.0028594	47U A250	2198	248	5.8
E.0028595	47U A300	2198	298	6.7



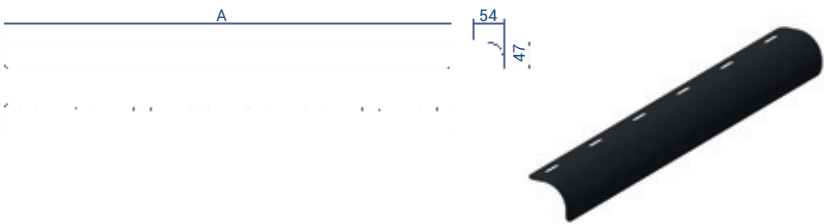
+ TRIM WITH LOGO - 2/4 POST

		Compatibility			Dimensions A	Weight (kg)
Part Nr	Version	2 post D75	2 post D150	4 post		
E.0028597	Printed	X	X	X	-	1.7
E.0028598	Leds	-	X	-	149	2.8
E.0028181	Leds	X	-	-	74	2.4
E.0024974	Leds	-	-	X	74	2.4



+ TOP DEFLECTOR - 4 POST

Part Nr	Version	Dimensions A	Weight (kg)
E.0024975	F600	383	2x0.4
E.0024976	F800	583	2x0.6
E.0024977	F900	683	2x0.7
E.0024978	F1000	783	2x0.8



+ RACK STRUCTURE

Part Nr	Version	Dimensions (HeightxWidthxDepth)	LBC (kg)	Weight (kg)
E.0028167	42U F1000	2000x800x961	1200 kg	63
E.0028168	42U F1200	2000x800x1161	1200 kg	65
E.0028169	47U F1000	2200x800x961	1200 kg	67
E.0028170	47U F1200	2200x800x1161	1200 kg	69

* Load-bearing capacity = LBC

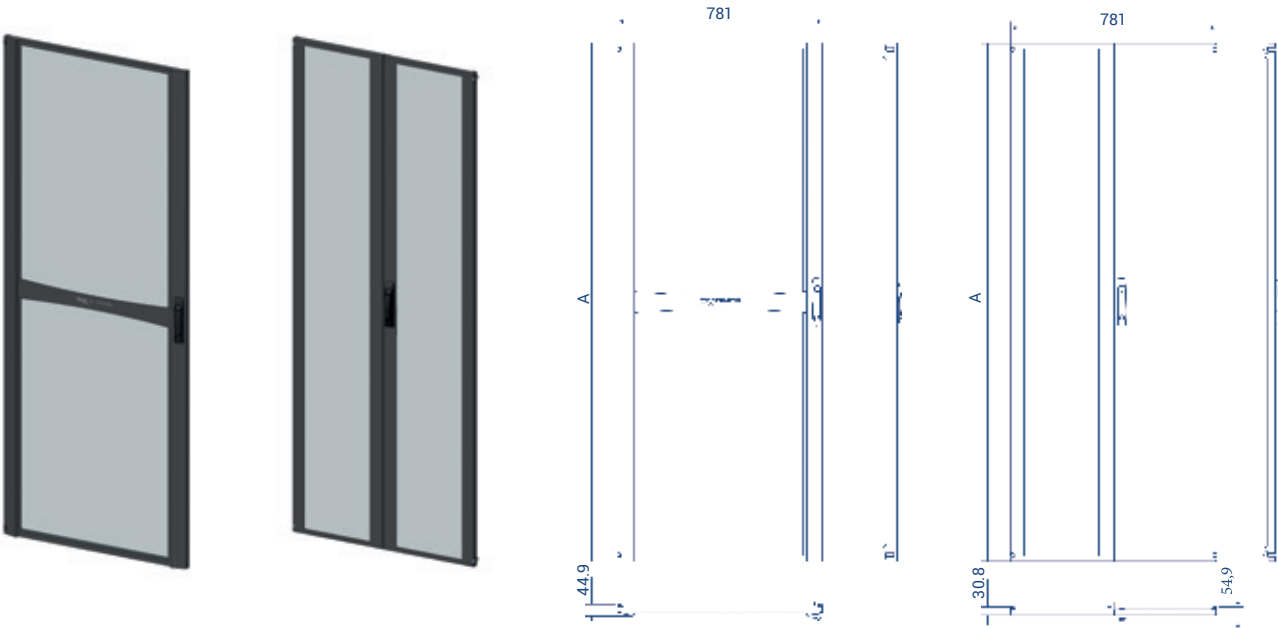


+ V2 VENTILATED DOORS

Part Nr	Version	Dimensions A	Weight (kg)
E.0028171	Simple V2 42U	1970	18
E.0028172	Simple V2 47U	2170	20
E.0028173	Doble V2 42U	1970	2x8.5
E.0028174	Doble V2 47U	2170	2x9.5

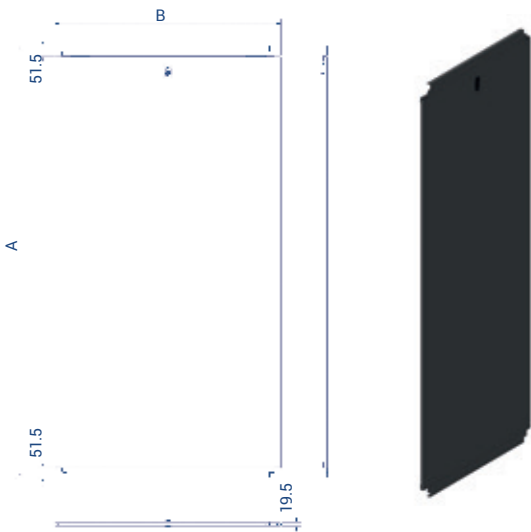
+ V3 VENTILATED DOORS

Part Nr	Version	Dimensions A	Weight (kg)
E.0029231	Simple V3 42U	1970	12.5
E.0029232	Simple V3 47U	2170	13.5
E.0029233	Doble V3 42U	1970	2x5.2
E.0029234	Doble V3 47U	2170	2x5.7



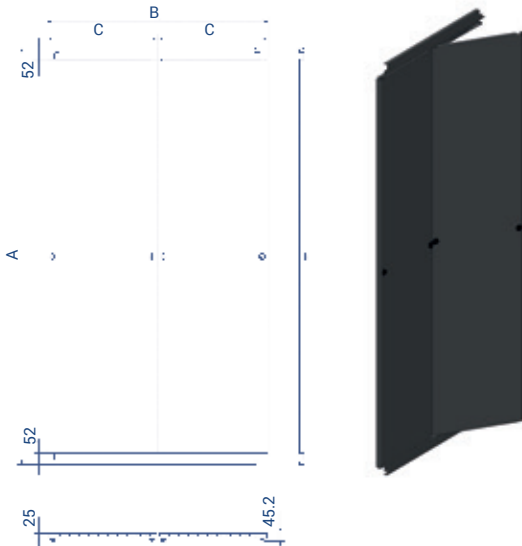
+ STANDARD SIDE PANEL

Part Nr	Version	Dimensions A B	Weight (kg)
E.0028175	42U F1000	2000 961	20
E.0028176	42U F1200	2000 1161	24
E.0028177	47U F1000	2200 961	22
E.0028178	47U F1200	2200 1161	26



+ HINGED SIDE PANEL

Part Nr	Version	Dimensions A B C	Weight Panel (kg)	Weight Total (kg)
E.0028233	42U F1000	2000 961 578	10	25
E.0028234	42U F1200	2000 1161 678	12	29
E.0028235	47U F1000	2200 961 578	11	27
E.0028236	47U F1200	2200 1161 678	13	31



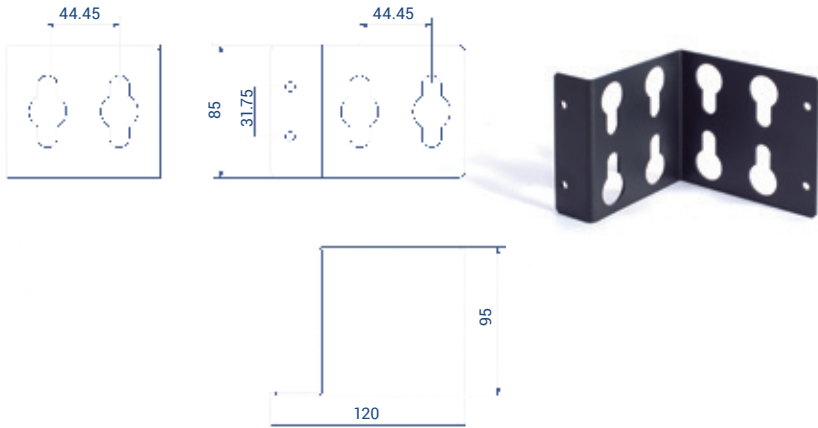
+ TOP DEFLECTOR

Part Nr	Version	Dimensions A B	Weight (kg)
E.0028179	F1000	834 46	0.6
E.0028180	F1200	1034 46	0.72



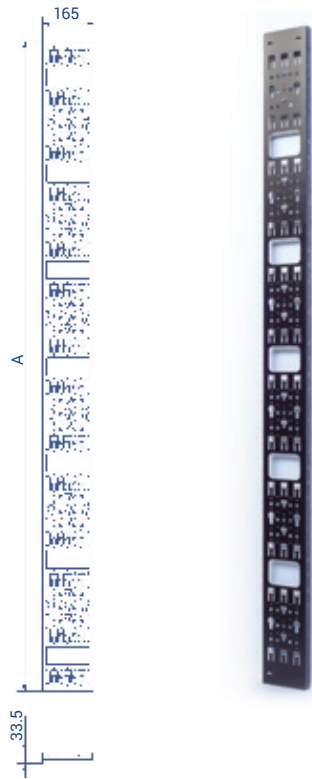
+ RACK PDU SUPPORT KIT

Part Nr	Version	Weight (kg)
E.0028182	Rack	2x0.24



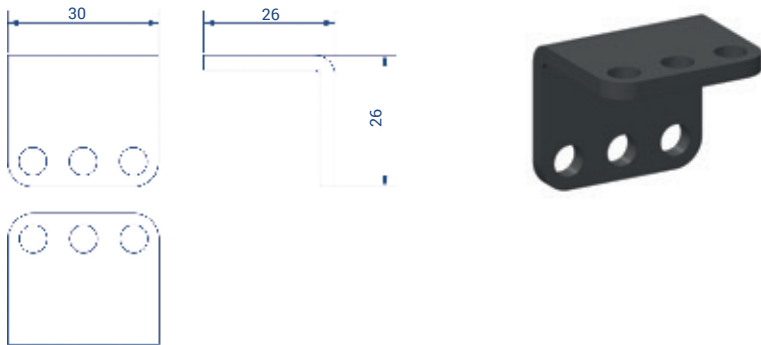
+ VERTICAL CABLE GUIDE CONDUIT

Part Nr	Version	Dimensions A	Weight (kg)
E.0028183	42U	1898	3.1
E.0028184	47U	2098	3.3



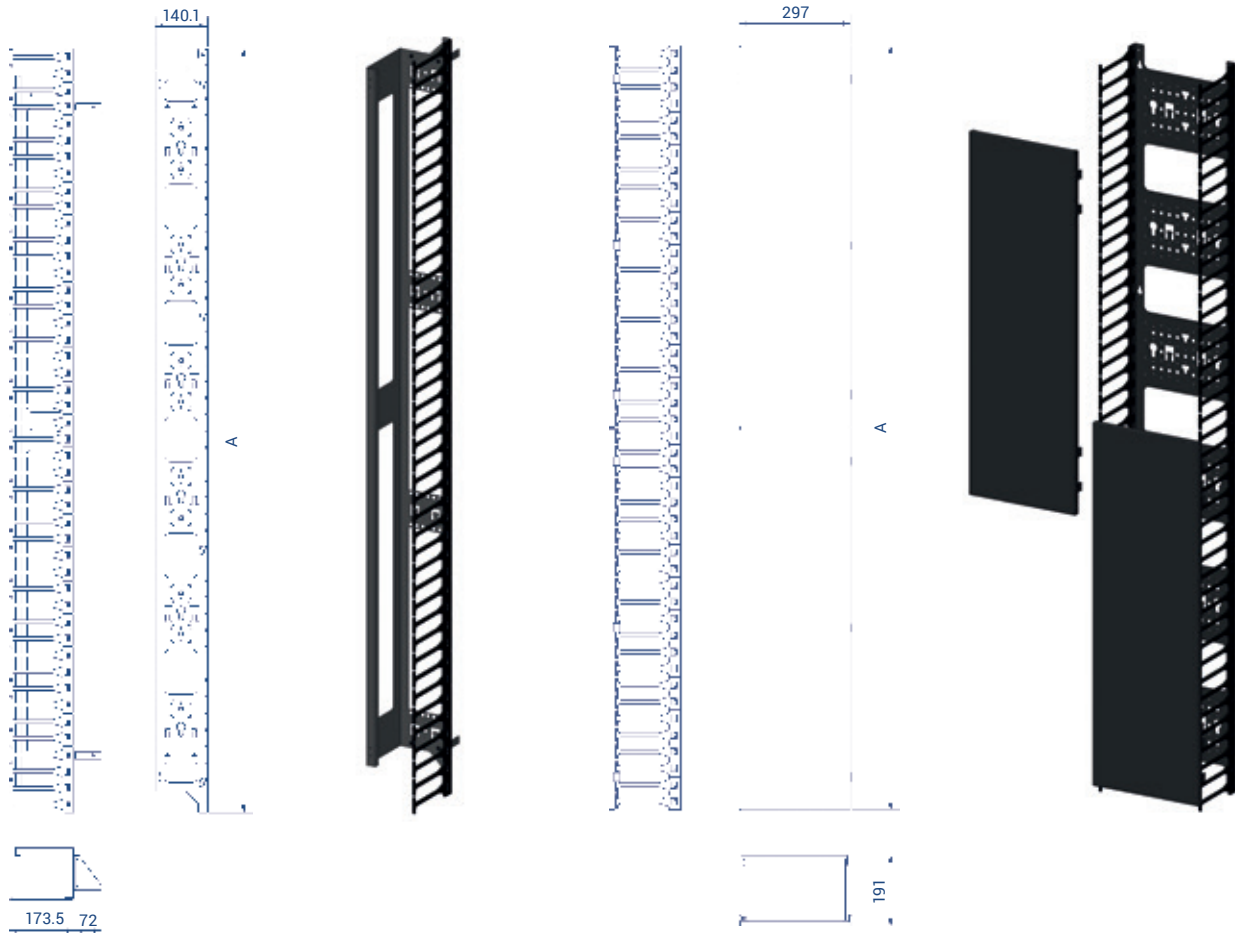
+ ARRAY JOINING KIT

Part Nr	Weight (Gr)
E.0028185	4x40



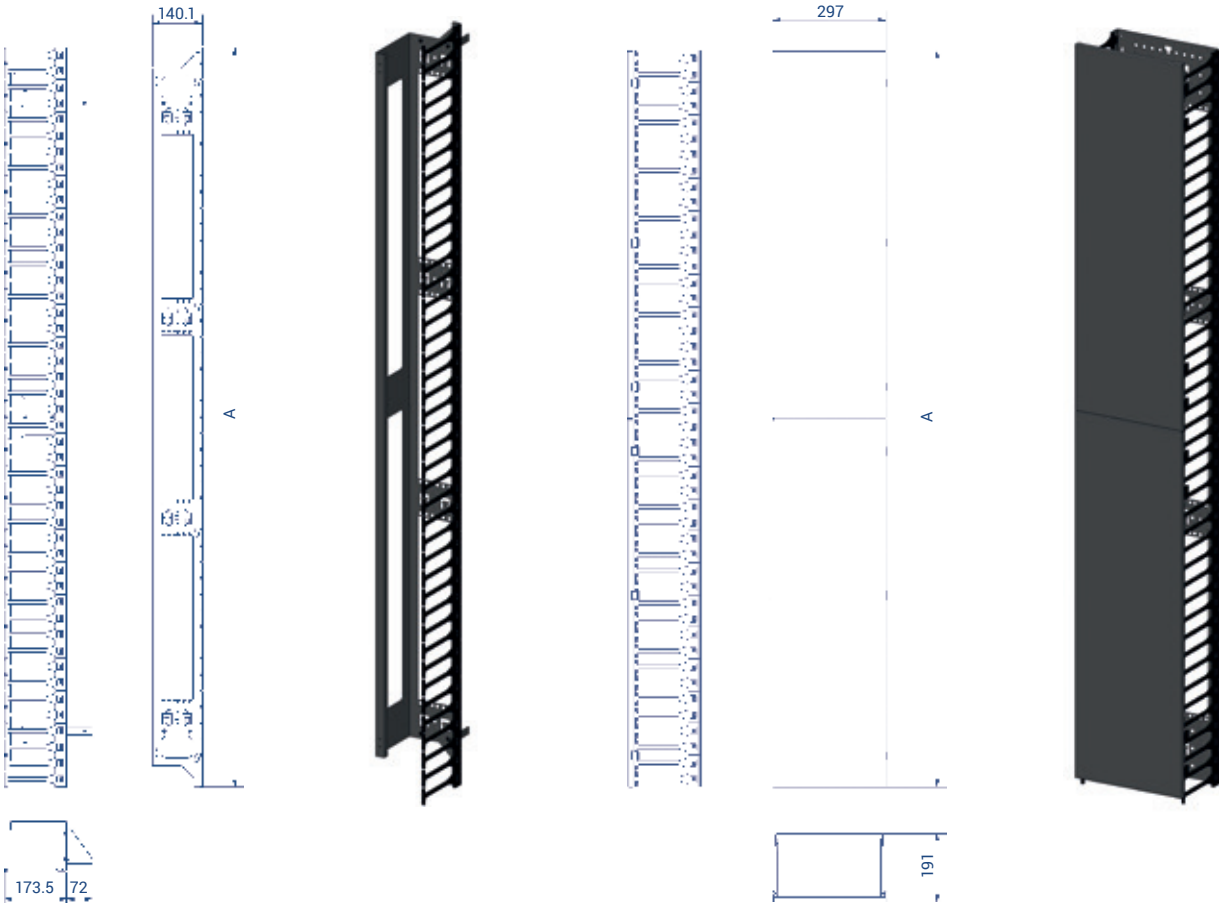
+ VERTICAL CABLE ORGANIZER

Part Nr	Version	Useful Area (mm2)	Dimensions A	Weight Total (kg)	Recommended Filling (25% useful area)			Maximum Filling (50% useful area)		
					Cat.5e (5.7mm)	Cat.6 (6.1mm)	Cat.6e (7.6mm)	Cat.5e (5.7mm)	Cat.6 (6.1mm)	Cat.6e (7.6mm)
E.0028186	42U A150	18315	1867	2x5.5	179	157	101	359	313	202
E.0028187	42U A300	46739	1865	8.8	458	400	258	916	800	515
E.0028188	47U A150	18315	2044	2x6.1	179	157	101	359	313	202
E.0028189	47U A300	46739	2045	9.6	458	400	258	916	800	515



+ VERTICAL ORGANIZER FOR PATCHING

Part Nr	Version	Extra units	Useful Area (mm2)	Dimensions A	Weight Total (kg)	Recommended Filling (25% useful area)			Maximum Filling (50% useful area)		
						Cat.5e (5.7mm)	Cat.6 (6.1mm)	Cat.6e (7.6mm)	Cat.5e (5.7mm)	Cat.6 (6.1mm)	Cat.6e (7.6mm)
E.0028190	42U A150	6U	18315	1867	2x4.8	179	157	101	359	313	202
E.0028191	42U A300	15U	46739	1865	7.4	458	400	258	916	800	515
E.0028192	47U A150	6U	18315	2044	2x5.5	179	157	101	359	313	202
E.0028193	47U A300	15U	46739	2045	8.1	458	400	258	916	800	515

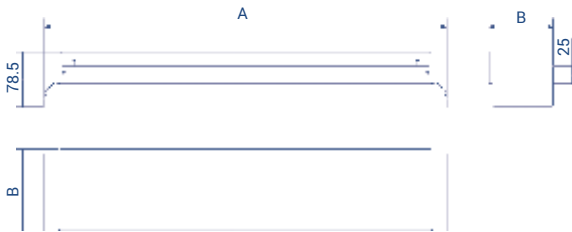


+ FRONT-REAR BRIDGING CONDUIT

Part Nr	Version	Dimensions		Useful Area (mm2)	Weight Total (kg)
		A	B		
E.0025012	150 F1000	544	73	1645	0.9
E.0025013	300 F1000	544	119	2726	1.2
E.0024972	150 F1200	744	73	1645	1.2
E.0024973	300 F1200	744	119	2726	1.6

+ CABLE FILLING CAPACITY

Part Nr	Version	Useful Area (mm2)	Recommended Filling (25% useful area)			Maximum Filling (50% useful area)		
			Cat.5e (5.7mm)	Cat.6 (6.1mm)	Cat.6e (7.6mm)	Cat.5e (5.7mm)	Cat.6 (6.1mm)	Cat.6e (7.6mm)
E.0025012	150 F1000	1645	16	14	9	32	28	18
E.0025013	300 F1000	2726	27	23	15	53	47	30
E.0024972	150 F1200	1645	16	14	9	32	28	18
E.0024973	300 F1200	2726	27	23	15	53	47	30

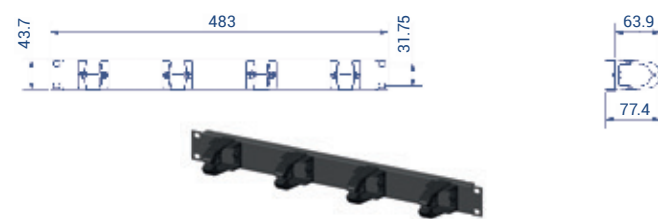


+ HORIZONTAL 19" CABLE ORGANIZER WITH RINGS

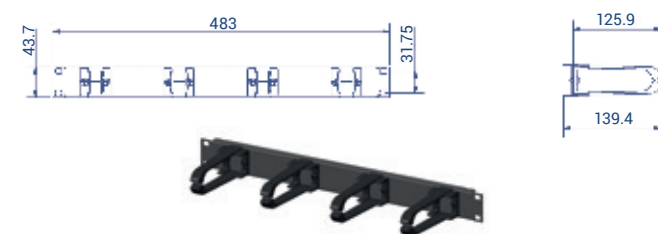
Part Nr	Version	Useful Area (mm2)	Recommended Filling (25% useful area)			Maximum Filling (50% useful area)			Weight (kg)
			Cat.5e (5.7mm)	Cat.6 (6.1mm)	Cat.6e (7.6mm)	Cat.5e (5.7mm)	Cat.6 (6.1mm)	Cat.6e (7.6mm)	
E.0028194	42U A150	1280	13	11	7	25	22	14	0.48
E.0028195	42U A200	3329	33	28	18	65	57	37	0.52
E.0028196	42U A250	3160	31	27	17	62	54	35	0.77
E.0028197	42U A300	6607	65	59	39	129	113	73	0.97
E.0028198	2 SIDES 1U 65 65	1280	13	11	7	25	22	14	0.83
		1280	13	11	7	25	22	14	
E.0028199	2 SIDES 1U 65 130	1280	13	11	7	25	22	14	0.87
		3329	33	28	18	65	57	37	
E.0028200	2 SIDES 1U 130 130	3329	33	28	18	65	57	37	0.91
		3329	33	28	18	65	57	37	
E.0028201	2 SIDES 2U 65 65	3160	31	27	17	62	54	35	1.3
		3160	31	27	17	62	54	35	
E.0028202	2 SIDES 2U 65 120	3160	31	27	17	62	54	35	1.5
		6607	65	57	36	129	113	73	
E.0028203	2 SIDES 2U 120 120	6607	65	57	36	129	113	73	1.7
		6607	65	57	36	129	113	73	

HORIZONTAL 19" CABLE ORGANIZER WITH RINGS

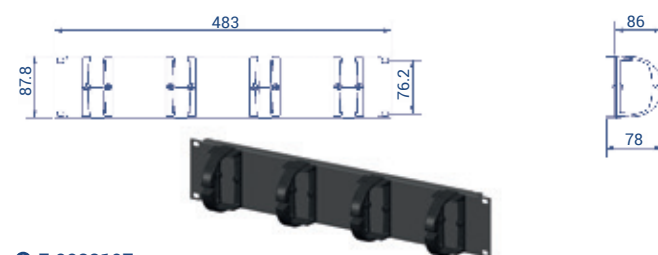
⊕ E.0028194



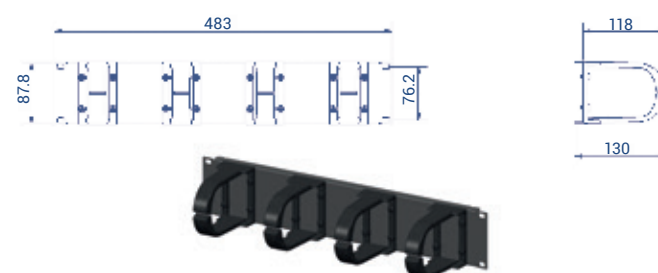
⊕ E.0028195



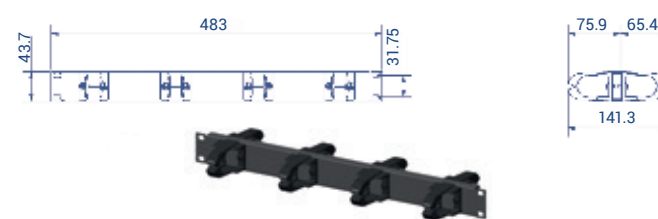
⊕ E.0028196



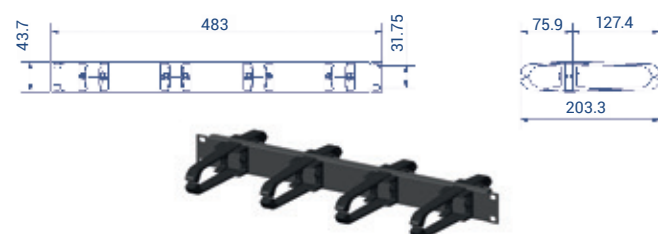
⊕ E.0028197



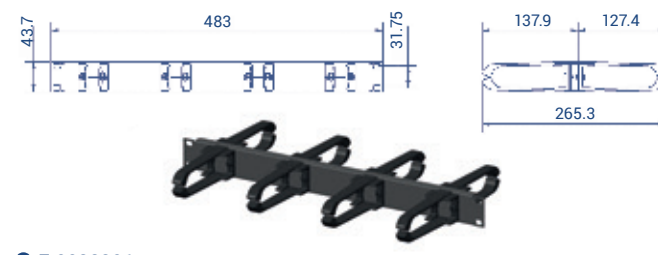
+ E.0028198



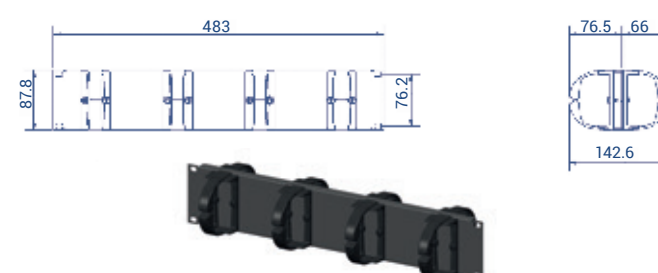
+ E.0028199



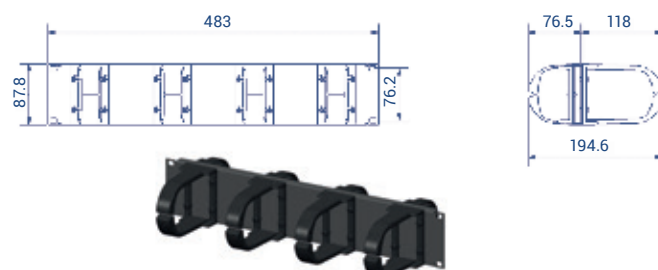
+ E.0028200



+ E.0028201



⊕ E.0028202



+ E.0028203



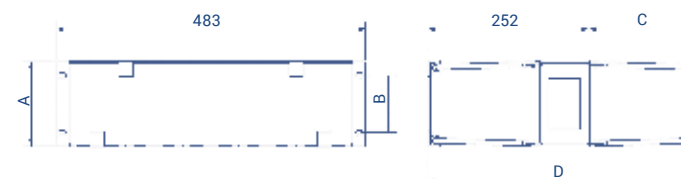
+ HORIZONTAL 19" ORGANIZER WITH FINGERS - 1 SIDE

							Recommended Filling (25% useful area)			Maximum Filling (50% useful area)		
Part Nr	Version	Dimensions			Weight (kg)	Useful Area (mm2)	Cat.5e (5.7mm)	Cat.6 (6.1mm)	Cat.6e (7.6mm)	Cat.5e (5.7mm)	Cat.6 (6.1mm)	Cat.6 (7.6mm)
		A	B	C								
E.0028204	1 SIDE F100 1U	43,7	31.4	113	0.7	2124	21	18	12	42	36	23
E.0028205	1 SIDE F100 2U	87.8	44.45	113	0.98	6909	68	59	38	135	118	76
E.0028206	1 SIDE F100 3U	132,25	88.9	113	1.25	11694	115	100	64	229	200	129
E.0028207	1 SIDE F170 1U	43.7	31.4	177	0.77	3514	34	30	19	69	60	39
E.0028208	1 SIDE F170 2U	87.8	44.45	177	1.05	11145	109	95	61	218	191	123
E.0028209	1 SIDE F170 3U	132.25	88.9	177	1.32	18776	184	161	103	368	321	207



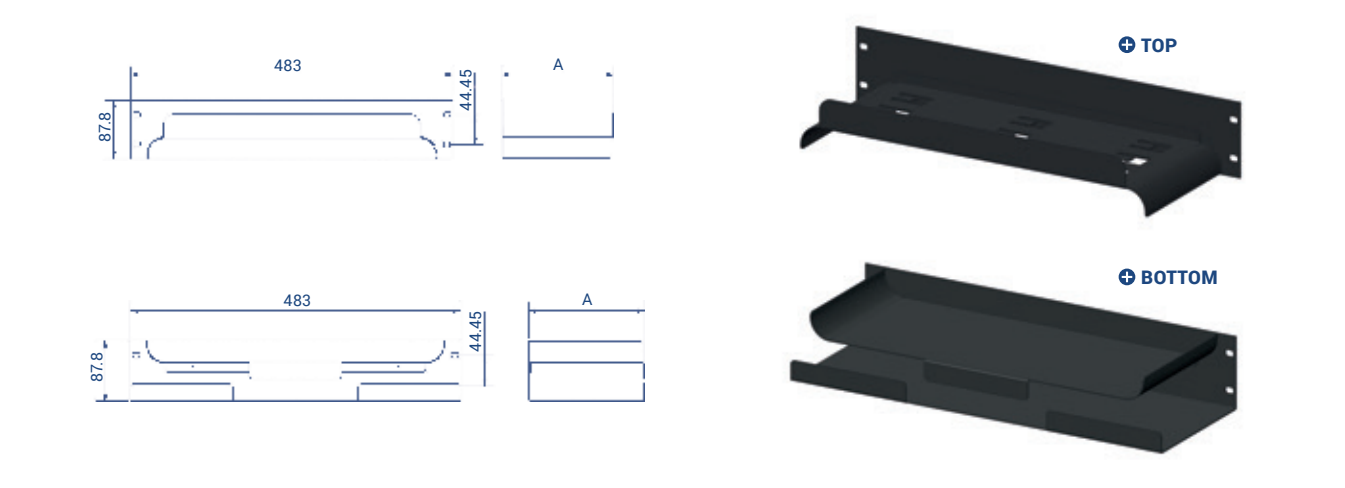
+ HORIZONTAL 19" ORGANIZER WITH FINGERS - 2 SIDES

								Recommended Filling (25% useful area)			Maximum Filling (50% useful area)		
Part Nr	Version	A	B	C	D	Weight (kg)	Useful Area (mm2)	Cat.5e (5.7mm)	Cat.6 (6.1mm)	Cat.6e (7.6mm)	Cat.5e (5.7mm)	Cat.6 (6.1mm)	Cat.6e (7.6mm)
E.0028210	2 SIDES F100 1U	43.7	31.4	113	365	1.58	Front 2124	21	18	12	42	36	23
							Post 3514	34	30	19	69	60	39
E.0028211	2 SIDES F100 2U	87.8	44,45	113	365	2.16	Front 6909	68	59	38	135	118	76
							Post 11145	109	95	61	218	191	123
E.0028212	2 SIDES F100 3U	132.25	88.9	113	365	2.75	Front 11694	115	100	64	229	200	129
							Post 18776	184	161	103	368	32	207
E.0028213	2 SIDES F170 1U	43.7	31.4	177	429	1.65	Front 3514	34	30	19	69	60	39
							Post 3514	34	30	19	69	60	39
E.0028214	2 SIDES F170 2U	87.8	44.45	177	429	2.23	Front 11145	109	95	61	218	191	123
							Post 11145	109	95	61	218	191	123
E.0028215	2 SIDES F170 3U	132.25	88.9	177	429	2.82	Front 18776	184	161	103	368	321	207
							Post 18776	184	161	103	368	321	207



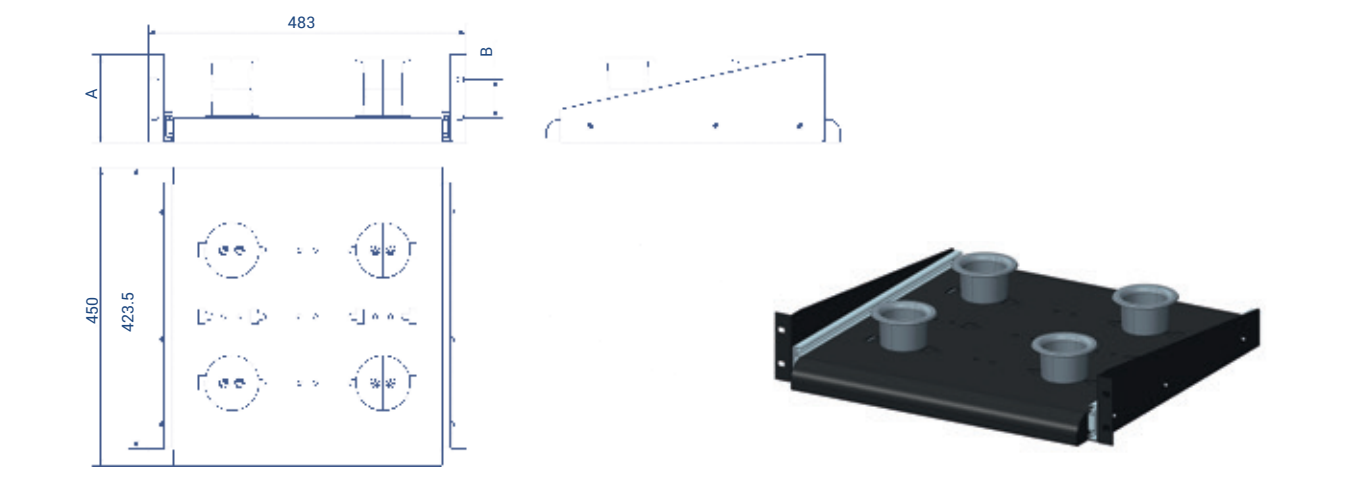
+ 19" TRANSITION TRAY

Part Nr	Version	Área Útil (mm2)	Dimensions A	Weight (kg)	Recommended Filling (25% useful area)			Maximum Filling (50% useful area)		
					Cat.5e (5.7mm)	Cat.6 (6.1mm)	Cat.6e (7.6mm)	Cat.5e (5.7mm)	Cat.6 (6.1mm)	Cat.6e (7.6mm)
E.0028216	SUP 2U F100	3260	97.5	1.2	32	28	18	64	56	36
E.0028217	SUP 2U F170	5675	167.5	1.6	56	49	31	111	97	63
E.0028218	INF 2U F100	6611	100	1.8	65	57	36	130	113	73
E.0028219	INF 2U F170	9026	170	2.6	88	77	50	177	154	99



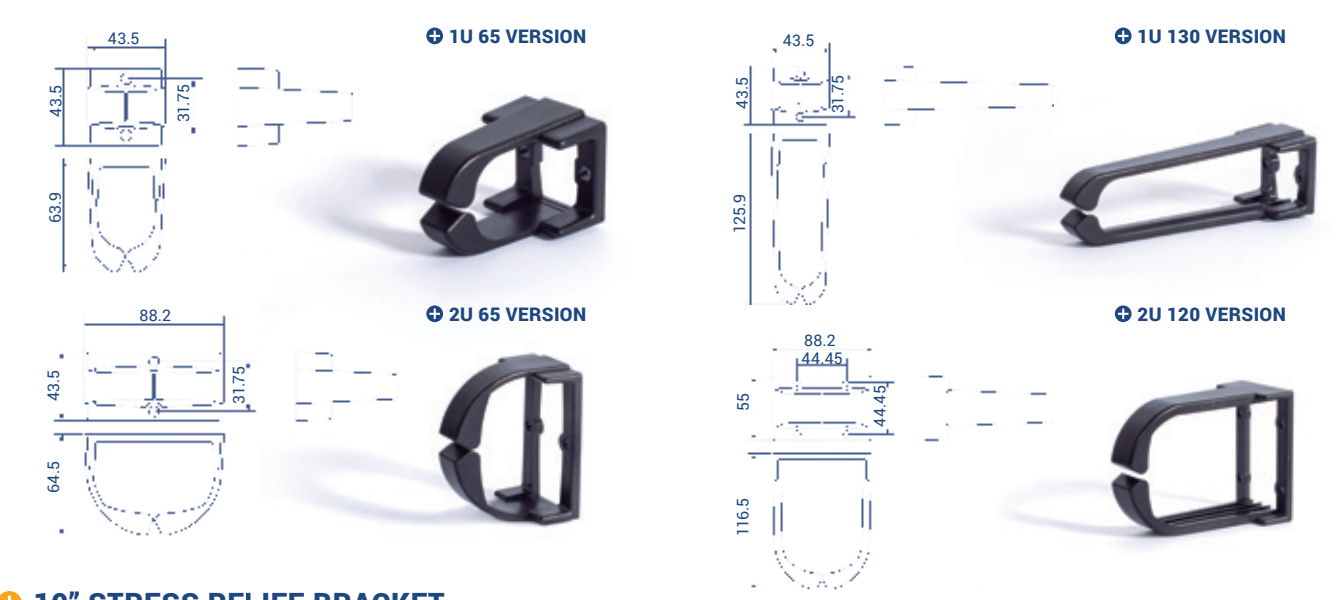
+ CABLE ROLLUP TRAY

Part Nr	Version	Dimensions		Weight Total (kg)
		A	B	
E.0028220	2U	87.8	44.45	5.8
E.0028221	3U	132.25	57.15	6.4



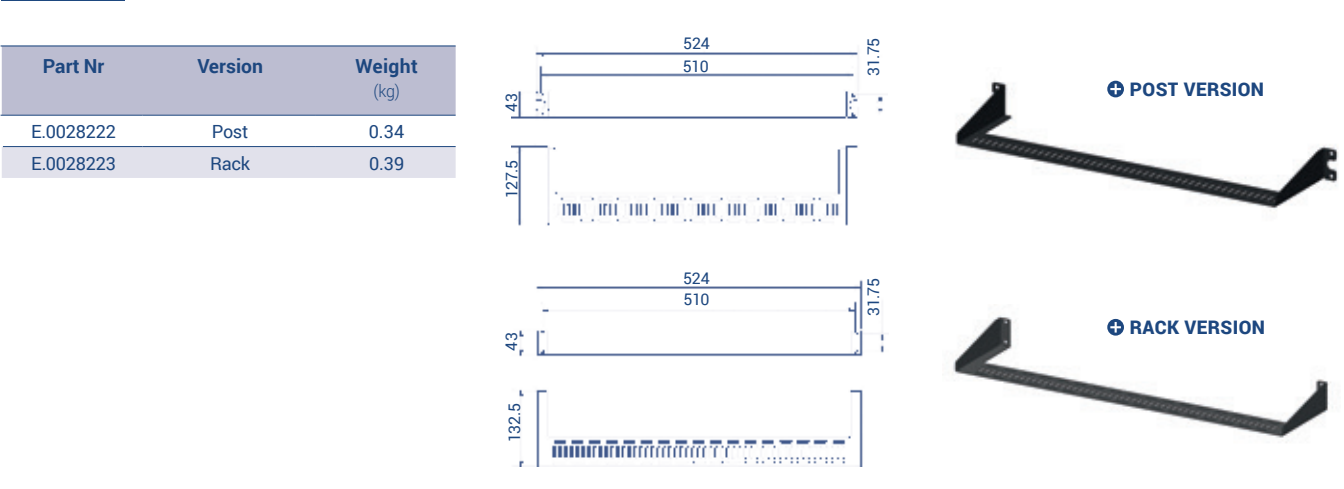
+ PLASTIC RING KIT

Part Nr	Version	Useful Area (mm2)	Recommended Filling (25% useful area)			Maximum Filling (50% useful area)		
			Cat.5e (5.7mm)	Cat.6 (6.1mm)	Cat.6e (7.6mm)	Cat.5e (5.7mm)	Cat.6 (6.1mm)	Cat.6e (7.6mm)
E.0028224	1U 65	1280	13	11	7	25	22	14
E.0028225	1U 130	3329	33	28	18	65	57	37
E.0028226	2U 65	3160	31	27	17	62	54	35
E.0028227	2U 120	6607	65	57	36	129	113	73



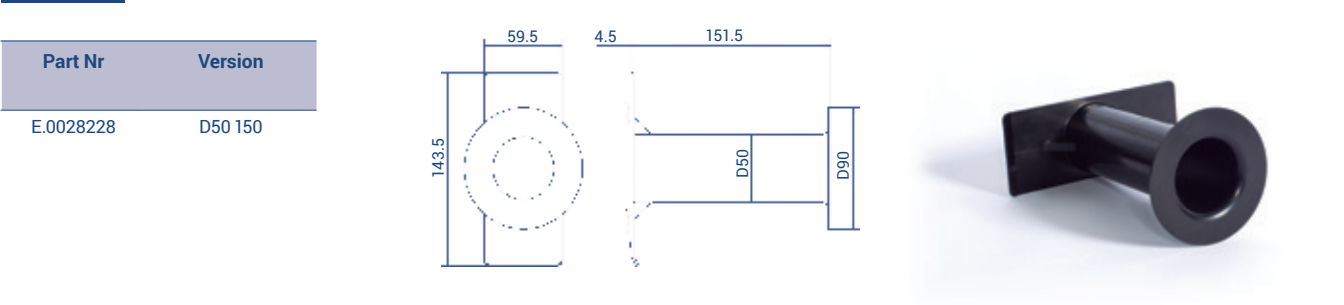
+ 19" STRESS RELIEF BRACKET

Part Nr	Version	Weight (kg)
E.0028222	Post	0.34
E.0028223	Rack	0.39



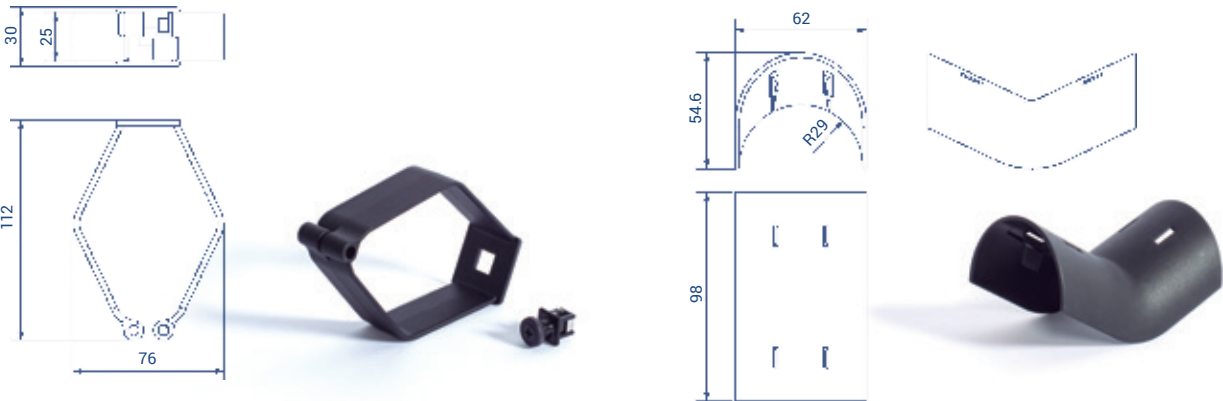
+ SPOOL KIT

Part Nr	Version
E.0028228	D50 150



+ CLAMP RING KIT

Part Nr	Version	Useful Area (mm2)	Recommended Filling (25% useful area)			Maximum Filling (50% useful area)		
			Cat. 5e (5.7mm)	Cat. 6 (6.1mm)	Cat. 6e (7.6mm)	Cat. 5e (5.7mm)	Cat. 6 (6.1mm)	Cat. 6e (7.6mm)
E.0028237	RHOMBUS-SHAPED RING	4117	40	35	23	81	70	45
E.0028238	RADIUS CLIP	-	-	-	-	-	-	-



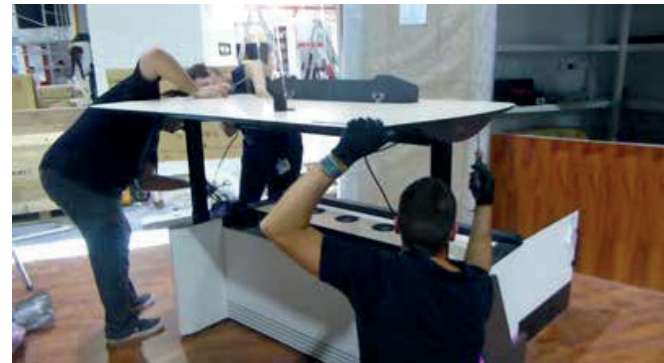
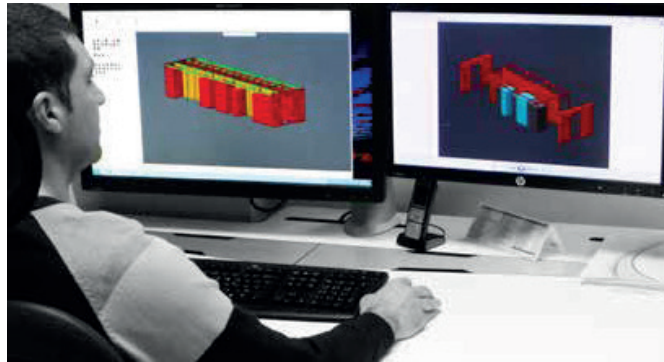
+ FABRIC CABLE TIE KIT

Part Nr	Version	Dimensions (HeightxWidthxDepth)	Cat. 5e (5.7mm)	Cat. 6 (6.1mm)	Cat. 6e (7.6mm)
E.0028229	D45 150 BLACK	150x12.5	62	54	35
E.0028230	D60 L200 BLACK	200x12.5	111	97	62
E.0028231	D60 L200 YELLOW	200x12.5	111	97	62
E.0028232	D60 L200 BLUE	200x12.5	111	97	62
E.0028599	D60 L200 WHITE	200x12.5	111	97	62
E.0028600	D60 L200 RED	200x12.5	111	97	62
E.0028743	D60 L200 GREEN	200x12.5	111	97	62
E.0028744	D60 L200 BLACK	330x12.5	308	269	173
E.0028745	ROLLO 5M BLACK	5000x12.5	-	-	-
E.0028746	ROLLO 25M BLACK	25000x13	-	-	-



SIDE VIEW
2- POST VERSION





SAIFOR, a rising player

+ SAIFOR SLU:

Founded in 1985 and privately owned, SAIFOR is a leader in the design and manufacture of customized solutions for Data Processing Centers and critical mission Control Rooms.

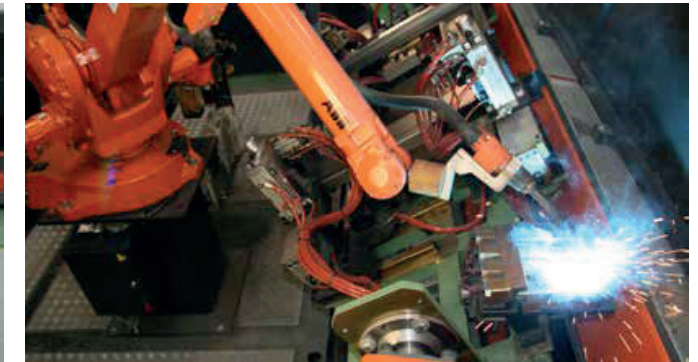
Specializing in 19" racks and customized technical furniture, SAIFOR has a track record of over 25 years providing the highest standards of quality and service, and continues to lead the DPC and Control Center infrastructure industry. SAIFOR's main facility, which houses its main design center and a production plant covering more than 12,000 m2, equipped with state of the art machinery, is located in Vallbona de Anoya, Barcelona, Spain. SAIFOR has Product

Showrooms in Barcelona, Palaiseau (France), Kontick (Belgium) and Singapore. It has affiliates and company-owned locations in France, Belgium and the Middle East. To supply the international market, SAIFOR has assembly and shipment facilities at its subsidiaries in Palaiseau (France) and Kontick (Belgium), which, together its network of official partners, can carry out projects anywhere in the world. SAIFOR is an IGE Group company.

+ State of the art technology:

Our facilities, specifically built for our operations, are equipped with cutting edge technology. Our in-house laboratory fitted with the most advanced high precision testing equipment available on the market, bears witness to our commitment to

innovation, from a technology as well as a management standpoint. Our R&D department can meet any technical needs and is constantly working on new ideas, allowing SAIFOR to remain at the forefront of technology.



+ Mission:

To find technical solutions for the industrial sector and its production processes through the use of new technologies and materials. To design, produce and customize high-quality products to create unique solutions that meet the most exacting requirements of any data center or control room infrastructure.

To ensure constant and sustained growth, with a focus on quality improvement and innovation. To develop a diversified client base, covering different sectors to ensure stability. To proactively search for and consolidate the relationship with new clients and earn the recognition of their professionals.



+ View:

To become the world leader in top-of-the-range 19" frames, cooling units and structured cabling solutions for data center infrastructures. To

establish our company as a leading player in the production of top-of-the-range specialized technical furniture for control centers.



+ People:

SAIFOR SLU's main asset is its people, their experience and professional and technical skills, and their know-how.

Their personal and professional development is a priority, and respecting and trusting them a basic principle.



+ Sustainability and Environment:

SAIFOR is fully committed to corporate environmental responsibility and has a policy of constant investment in technological resources to contribute to environmental protection and develop plans to prevent and reduce pollution and other environmental impacts, which are implemented in its production processes.

Such activities are carried out on three major fronts: water control, energy control, and use of environmentally safe materials. EMAS (Eco-Management and Audit Scheme) is a voluntary compliance EU standard that recognizes the efforts of organizations that

have implemented an EMS (Environmental Management System), allowing them to assess, improve and report on their environmental performance.

EMAS Awards: in 2010, SAIFOR S.L.U. received the EMAS award for its sustained commitment over more than 10 years to the fight against environmental impacts. Such recognition is the fruit of the sustained work of the SAIFOR team. This award is an incentive to persist in this environmental protection effort and to carry on working in the same direction.



+ Quality:

Quality and the environment are two particularly important elements of SAIFOR's mission statement. All of SAIFOR's professional staff have the committed and responsible attitude required to achieve the highest quality standards coupled with a high level of environmental respect.

SAIFOR has in place an ERP system to assist in the management of all its processes and carry out exhaustive control and monitoring – including traceability – of all the projects it undertakes.

The design of our facilities and the know-how

of SAIFOR's professional team allow us to successfully carry out the company's Green IT policies and manufacture high-quality products.

Client and results driven: to ensure the continuity of the company, future service to our clients and the stability of our partners. Client satisfaction is an assurance of success. SAIFOR holds ISO 9001 quality certification since 1997; ISO 14001 environmental certification since 2000; and EMAS environmental certification since 2000.

+ SAIFOR SLU**Global Headquarters International Sales**

Polígono Industrial La Plana, Nave 4
08785 Vallbona d'Anoia · Barcelona · SPAIN
Tel. +34 93 773 83 38 · Fax +34 93 771 84 47
Email: saifor@saifor.com · www.saifor.com

+ SAIFOR France SARL**Sales Office · FRANCE**

Zone Industrielle des Glaises
9, Rue Salvador Allende
91120 Palaiseau · FRANCE
Tel. +33 01 69191290 · Fax +33 01 69191291
Email: saifor@saifor.fr · www.saifor.fr

+ SAIFOR Benelux BVBA**Sales Office · BELGIUM, NETHERLANDS & LUXEMBOURG**

Prins Boudewijnlaan 17, unit 4
2550 Kontich · BELGIUM
Tel. +32 3 444 05 00 · Fax + 32 3 444 05 09
Email: info@saifor.be · www.saifor.be

+ SAIFOR Middle East FZ-LLC**Sales Office · MIDDLE EAST**

DIC · Bldg @12, 1st Floor, 104 - 18 P.O. Box
73030 Dubai · UAE
Tel + 971 4 552 1405 · Fax + 971 4 552 1406
Email: salesme@saifor.com · www.saifor.com

www.saifor.com**SPAIN | FRANCE | BENELUX | MIDDLE EAST****DOWNLOAD
CATALOG**