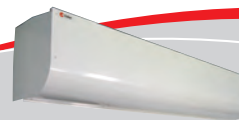
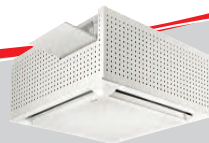
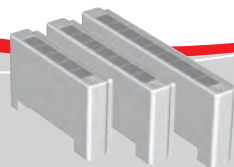


# Chillquick light Technical data



Indoor/Outdoor unit	CQLI/SAC	2	3	4	5
Rated cooling capacity*	kW	5	10	15	20
Mains	V-Ph-Hz	400-3-50	400-3-50	400-3-50	400-3-50
Power input (complete system)	kW	2,5	5	7	10
Pre-cutout (slow fuse)	A	10	16	20	20
Circuits	kpl	1	1	1	1
Refrigerant	kg	2,5	3	4	5
<b>Indoor unit CQLI, dimensions</b>					
Width	mm	750	750	750	750
Depth	mm	350	350	350	350
Height	mm	1600	1600	1600	1600
Operating weight	kg	200	200	200	200
<b>Outdoor unit SAC, dimensions</b>					
Width	mm	900	950	950	950
Depth	mm	350	400	400	400
Height	mm	600	860	1300	1400
Operating weight	kg	58	90	110	120
Sound level**	dB(A)	40	40	45	53
Water flow, temp. 8/16 °C	l/s	0,12	0,24	0,36	0,48
Max. pipeline size	DN	18	22	28	35
Pump external pressure	kpa	98,0	95,0	87,0	63,0
Buffer tank volume	l.	100	100	100	100
Expansion tank size/pre-pressure	l/bar	4/0.5	4/0.5	4/0.5	4/0.5
Max. size of water network with standard expansion tank	l	450	450	450	450



\* evap. temp. 5 °C, cond. temp 45 °C

\*\* sound level at 10 m away in a free field

Chiller Oy reserves the right to make changes without separate notice!

**Chiller air-conditioning solutions**