

Chiller
AIR-CONDITIONING

Functional and innovative air-conditioning solutions

- customer-based product development
- easy to install and service
- can be integrated in various architectonic solutions
- stylish design

Composite cassette fan coils

BOX Composite

new operating concept
for cassette fan coils:
Install, use and service – easily

The **BOX Composite** cassette fan coil developed by Chiller Oy is a discrete and stylish part of the surface structure of the ceiling. The cassette fan coil is suitable for, for example, shops, restaurants and offices.

The **BOX Composite** cassette represents an entirely new operating concept: **install, use, service**. The BOX cassette fan coil is installed on the ceiling surface inside its transport package, which is removed once the work is complete. Installation is easier than before; there is no cumbersome attachment by a threaded rod at the side, but instead at the corners of a base-plate of the device. The BOX cassette fan coil is particularly suitable for both caulked ceilings and those implemented using T-rails; maintenance hatches are no longer needed at its sides. The new construction means that the ceiling plates remain neat even after servicing, because they need not be moved to the side.

Discharge of condensate water

The BOXH cassette fan coil is a model without a condensate-water pump, which is our primary recommendation. This is an excellent solution for electrical, electronics and shop facilities. The fall of the condensate water is 150 mm. In the BOX model the condensate water is removed from the unit using a rotary condensate-water pump. The pump's own sensor controls the operation according to the level of the condensate water in three steps (start, stop, alarm) We recommend 600 mm as the maximum lift head. A condensate-water gravity outlet pipe connection is always supplied as standard in the device, and permits the water to be led to the drain network over a 70-mm fall.



Control

The control valve is installed inside the device already at the factory, so the device and the valve can be pressure tested at the factory. If necessary, the balancing and shut-off valve can be installed outside the device.

The cooling capacity of the cassette fan coil is adjusted with wall controllers TH-T310F-24 V or THT320F. They control both heating and cooling. In addition to the control valve, they automatically adjust the speeds of the fan. This controller can also be used to control operation of a heating radiator. It is easy to adjust the dead zone and to use the various set points with the THT320F controller.

Appearance

In the design of the BOX cassette, particular attention was paid to the external appearance of the device. It was designed for the 600*600 T-rail module. The colour of the grille is RAL 9002, the colour of the outer surface is RAL 7047 while that of the plastic components is RAL 9018.

Architectonic casing

For demanding installations without ceilings, we have developed a architectonic casing system that is made of metal. The casings can be handily attached, with their own brackets, from the ceiling plate of the cassette fan coil. The standard colour of the architectonic casings is RAL 9002.

Fresh air connection

The fresh air connection can be located either at the side or on top of the machine. The connection pipe of the fresh air ducts is on either side. The fresh air connection raises the height of the unit by 32 mm.

Safe technology

All the materials used have halogen-free fire protection. All the cables used are also halogen-free.



Install



Operate



Service

Accessories

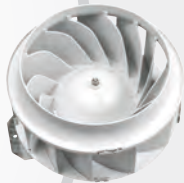
Features



BOXH model without a condensate-water pump with a 140-mm fall



Effective installation protection



Fans with ball bearings



Valves inside the device



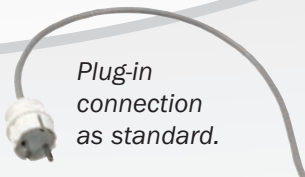
Fresh air connection



Wall controllers THT310F and 320F



Standard delivery without architectonic casing



Plug-in connection as standard.

Chiller Oy

Louhostie 2
FI-04300 Tuusula
Finland
Tel. +358 9 2747 670
Fax +358 9 2747 6777
info@chiller.fi
www.chiller.fi

REFTEC AS

Vestre Rosten 85
NO-7075 Tiller
Norway
Tel. +47 7310 3950
Fax +47 7310 3955
post@reftec.no
www.reftec.no

OOO "Coolmaster"

190005 St.-Petersburg,
Russia
Nab.Obvodnij channel, 139
Tel. +7 812 448 4288
Fax +7 812 448 4289

125310 Moscow, Russia
Pjatnitskoe shosse 24
Tel. +7 495 225 5017
Fax +7 495 751 4000
coolmast@aha.ru
www.coolmaster.biz

Chiller Sverige AB

Warfinges Väg 30
SE-112 51 Stockholm
Sweden
Tel. +46 8 5450 2080
Fax +46 8 611 0680
info@chillersverige.se
www.chillersverige.se

Functional
and innovative
air-conditioning
solutions

